



# Eastern Mediterranean University

*"Virtue, Knowledge, Advancement"*



## FACULTY OF ENGINEERING MECHANICAL ENGINEERING DEPARTMENT MECHATRONICS ENGINEERING PROGRAM

2024/2025  
ACADEMIC YEAR

[me.emu.edu.tr](http://me.emu.edu.tr)



**Mechanical Engineering Department**  
Eastern Mediterranean University  
Famagusta, North Cyprus  
via Mersin 10 Turkey  
Tel: +90 392 6301210  
Fax: +90 392 3653715  
E-mail: [medept@me.emu.edu.tr](mailto:medept@me.emu.edu.tr)  
Web: <http://me.emu.edu.tr>

<b>Welcome Note by Head of Department .....</b>	<b>1</b>
<b>1 GENERAL INFORMATION .....</b>	<b>2</b>
1.1 Mechanical Engineering Department .....	2
1.2 Eastern Mediterranean University Mission Statement .....	2
1.3 Faculty of Engineering Mission Statement .....	2
1.4 Departmental Mission Statement .....	2
1.5 Mission of the Program .....	2
1.6 Program Educational Objectives .....	3
1.7 Student Outcomes .....	3
1.8 Department Website .....	3
<b>2 STAFF .....</b>	<b>5</b>
2.1 Academic Staff of Mechanical Engineering Department .....	5
2.2 Teaching Assistants of Mechanical Engineering Department .....	7
2.3 Administrative and Technical Staff of Mechanical Engineering Department .....	7
2.4 Academic Staff of Electrical & Electronics Engineering Department .....	8
2.5 Teaching Assistants of Electrical & Electronics Engineering Department .....	9
2.6 Administrative and Technical Staff of Electrical & Electronics Engineering Department .....	9
<b>3 FACILITIES .....</b>	<b>10</b>
<b>4 PROGRAM CURRICULUM .....</b>	<b>15</b>
4.1 Courses .....	15
4.2 Course Descriptions .....	18
<b>5 UNIVERSITY AND ACADEMIC REGULATIONS .....</b>	<b>27</b>
5.1 English Language Proficiency Requirements .....	27
5.2 Conditions for Taking Courses from another Institution .....	28
5.3 Student Advisor .....	28
5.4 Course Registration .....	28
5.5 Registration Procedure .....	28
5.6 Academic Term .....	29
5.7 Course Load .....	29
5.8 Prerequisite Courses .....	29
5.9 Repeating a Course .....	29
5.10 Course Selection .....	29
5.11 Course Times / Hours .....	29
5.12 Late Registration .....	29
5.13 Adding or Dropping Courses .....	29
5.14 Course Withdrawal .....	30
5.15 Course Evaluation .....	30
5.16 Mid-term Examinations .....	31
5.17 Final Examinations .....	31
5.18 Other Criteria to be Considered for Assessment .....	31
5.19 Make-up Examinations .....	31
5.20 Resit Examinations .....	31
5.21 Graduation Make-up .....	32
5.22 Appeals .....	32
5.23 Semester Evaluation by GPA .....	33
5.24 Overall Evaluation by CGPA .....	33
5.25 Scholastic Standing .....	33
5.26 Leave of Absence .....	33
5.27 Returning from Leave of Absence .....	33
5.28 Cancelling Registration from the University and Refunding .....	33
5.29 Attendance Requirements .....	34
5.30 Student Status .....	34
5.31 Student Portal Service .....	34
5.32 Summer Sessions .....	34
<b>6 CODE OF ETHICS FOR STUDENTS .....</b>	<b>35</b>
<b>7 SAFETY GUIDELINES .....</b>	<b>36</b>
<b>8 INDUSTRIAL TRAINING .....</b>	<b>37</b>
<b>9 CAPSTONE DESIGN PROJECTS .....</b>	<b>38</b>
<b>10 DEPARTMENTAL COMMITTEES .....</b>	<b>39</b>

## *Welcome Note by Head of Department*

### *Dear Students,*

I would like to welcome you to the Department of Mechanical Engineering. I am pleased that you have chosen our department and I hope that you would find the university experience in our department exceedingly rewarding. Our department has a distinguished record in both teaching and research. Our Mechanical and Mechatronics Engineering BS programs are accredited by ABET.

Mechatronics Engineering undergraduate program is administered by the Mechanical Engineering Department and jointly supported by the Mechanical Engineering Department and Electrical and Electronics Engineering Department since 2009-2011. Mechatronics is an interdisciplinary field, combining traditional electrical, electronic, mechanical, control and computer engineering skills, applied to solve problems that bridge the boundaries between these disciplines, requiring multi-skilled practitioners. The objective of the program is to inculcate a flexible, multi-technological approach in our graduates by imparting the knowledge of mechanical, electrical and electronics, and computer engineering.

Together we strive to provide you with high-quality engineering education and hope that all our graduates have a strong education and practical background, with teaming and leadership skills. We believe in a broad education which instills a sense of lifelong learning, community and leadership values in students, together with an appreciation of global issues. We encourage students to express and improve themselves with their knowledge and skills to respond to engineering problems in wide range of areas. We are dedicated to preparing our graduates to be leading contributors in response to the dire needs of industry, academia, and government, by providing them high quality education through continuous improvement of the program. Our curriculum undergoes regular revisions to ensure local relevance with a global perspective. Our vision is to graduate creative problem-solvers who can tackle issues from a variety of perspectives. Our mission is to empower you with sound knowledge of the foundations of mechanical engineering along with effective communication, analytical, and problem-solving skills and thus prepare you as competent engineers who can adapt to new circumstances in professional life.

As a department our vision is to be recognized nationally and internationally for excellence in mechanical engineering education, graduating world-class mechanical engineers, and supporting innovative research. We aim to be the first choice in the Middle East region for students starting their engineering education, and for employers that hire mechanical engineers.

We aim to provide academic guidance to help you with program requirements, course prerequisites, course sequencing, etc., as well as provide career guidance to help you choose a meaningful and gratifying job after graduation. All our faculty members, staff and I look forward to working closely with you during your education here in the Mechatronics Engineering Program. You will notice that our department has a very friendly atmosphere and we always promote a close knit community of students and faculty. Please make good use of this document and I encourage you to contact our faculty and staff if you have any questions regarding the department and our programs.

Sincerely

**Assoc. Prof. Dr. Murat ÖZDENEFE**  
*Chair of Department*



**Assoc. Prof. Dr. Murat ÖZDENEFE**  
*Chair of Department*  
Mechanical Engineering  
Eastern Mediterranean University  
Famagusta, North Cyprus  
via Mersin 10, Turkey  
Office No: ME 201A  
Tel: +90 392 630 1209  
Fax: +90 365 365 3715  
E-mail: [murat.ozdeneffe@emu.edu.tr](mailto:murat.ozdeneffe@emu.edu.tr)

## 1- GENERAL INFORMATION

---

### 1.1 Mechanical Engineering Department

The Department of Mechanical Engineering (ME) is one of the first three departments established in this University. The graduate program of the department was started in 1990. The Department offers programs of study leading to the degrees of Bachelor of Science (B.S.) in Mechanical, Mechatronics & Energy Systems Engineering, Master of Science (M.S.), and Doctor of Philosophy (Ph.D.) in Mechanical Engineering. The Mechanical Engineering Department has the largest population of international students in EMU at present. Our Mechanical and Mechatronics Engineering BS programs are accredited by ABET (Accreditation Board for Engineering and Technology). ABET is a non-profit organization and accreditation board that accredits programs in engineering, applied science, computing etc. ABET assures the quality of university programs, college or institutions. It is required by ABET that our engineering programs meet the quality standards set by ABET. ABET accreditation provides vast number of opportunities to students, institutions, programs and employers, for example, it helps students and parents to choose among quality assured programs. Engineers who graduated from an ABET accredited engineering program, are distinguished from others as employers seek for well-prepared engineers. Institutions or colleges continuously improve the quality of their programs for better outcomes.

### 1.2 Eastern Mediterranean University Mission Statement

The Eastern Mediterranean University has set as a mission becoming a university acting in line with universal values, guided by internationally recognized academic educational criteria, providing solutions for regional and international problems with a sense of social responsibility, raising graduates who have internalized multiculturalism, free thought, tolerance and participation as well as carrying out work to make international improvements in the fields of production, science, arts and sports. This statement is published in the University website: <https://www.emu.edu.tr/en/about-emu/mission-and-vision/594>

### 1.3 Faculty of Engineering Mission Statement

- Contribute to the betterment of our society through the pursuit of innovative education, active learning and cutting-edge scientific research.
- Maintain our regional leadership in engineering education and research, and develop close relationships with and provide knowledge, services and technology to all related communities in its area.
- Provide opportunities and create an esteemed academic environment for the exchange of diversity of cultures, social, political and ideological knowledge and professional talents among the students as well as the faculty.
- Assure quality and foster systematic pursuit of improvement in quality of education to graduate engineers with abilities to analyze and interpret data, design and conduct experiments, apply knowledge to solve engineering problems in a global, economic, environmental, societal context with focus on social, political, ethical, health and safety, manufacturability, and sustainability in a life-long learning capacity.

This statement is published in the Faculty website: <http://eng.emu.edu.tr/>

### 1.4 Departmental Mission Statement

The mission of the Mechanical Engineering Department is to cultivate the creation integration, transfer and application of knowledge relevant to the disciplines of Mechanical, Mechatronics and Energy Systems Engineering. The aim of our programs is to encourage students to express and improve themselves with their knowledge and skills to respond to engineering problems in wide range of areas. The programs are dedicated to preparing the graduates to be leading contributors in response to the needs of industry and society. Also, the purpose of the post graduate programs is to contribute to the technological improvement to serve national and international communities. Through continuously developing our educational and research programs, students graduating as engineers become professional leaders who can apply their knowledge and skills to work on the engineering problems encountered by community and industry. This statement is published in the Department website. <https://me.emu.edu.tr/en/about-us/mission-and-vision>

### 1.5 Mission of the Program

Mechatronics Engineering undergraduate program is administered by the Mechanical Engineering Department and jointly supported by the Mechanical Engineering Department and Electrical and Electronics Engineering Department since 2009-2011. Mechatronics is an inter-disciplinary field, combining traditional electrical, electronic, mechanical, control and computer engineering skills, applied to solve problems that bridge the boundaries between these disciplines, requiring multi-skilled practitioners. The objective of the program is to inculcate a flexible, multi-technological approach in our graduates by imparting the knowledge of mechanical, electrical and electronics, and computer engineering. The mission of the mechatronics engineering program is to educate creative engineers that

can establish the relationship between mechanical, electrical, electronic, and software and control engineering subjects and generate pragmatic solutions for engineering problems.

### 1.6 Program Educational Objectives

The educational objectives of the undergraduate program in Mechatronics Engineering are to provide a high-standard education and training to its students so that beyond 3 to 5 years after graduation will enable the graduates to

- PEO1: Perform successfully in mechatronics engineering and related fields
- PEO2: Attain advancement in their career through professional activities and higher education
- PEO3: Develop versatile relations in a global work environment
- PEO4: Have respect and appreciation for individuals, society, human heritage and environment

### 1.7 Student Outcomes

The Mechatronics Engineering program ensures the student outcomes ‘1’ through ‘7’ in its curriculum, and the outcomes are evaluated through direct and indirect assessments. Upon completion of the BS in Mechatronics Engineering Program at the Department of Mechanical Engineering, Eastern Mediterranean University, the graduates have the following knowledge, understanding, and capabilities:

1. an ability to identify, formulate, and solve complex engineering problems by applying principles of engineering, science, and mathematics
2. an ability to apply engineering design to produce solutions that meet specified needs with consideration of public health, safety, and welfare, as well as global, cultural, social, environmental, and economic factors
3. an ability to communicate effectively with a range of audiences
4. an ability to recognize ethical and professional responsibilities in engineering situations and make informed judgments, which must consider the impact of engineering solutions in global, economic, environmental, and societal contexts
5. an ability to function effectively on a team whose members together provide leadership, create a collaborative and inclusive environment, establish goals, plan tasks, and meet objectives
6. an ability to develop and conduct appropriate experimentation, analyze and interpret data, and use engineering judgment to draw conclusions
7. an ability to acquire and apply new knowledge as needed, using appropriate learning strategies.

### 7.1 Department Website

The following information is made available on the department’s homepage (me.emu.edu.tr):

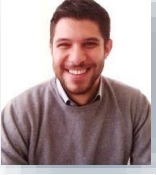
1. About Us: <https://me.emu.edu.tr/en/about-us>
  - a. Chairman’s Message: <https://me.emu.edu.tr/en/about-us/chairmans-statement>
  - b. Mechanical Eng. Academic Staff: <https://me.emu.edu.tr/en/about-us/staff/academic-staff>
  - c. Administrative Staff: <https://me.emu.edu.tr/en/about-us/staff/administrative-staff>
  - d. Technician Staff: <https://me.emu.edu.tr/en/about-us/staff/administrative-staff>
  - e. Research Assistants: <https://me.emu.edu.tr/en/about-us/staff/research-assistants>
  - f. News: <https://me.emu.edu.tr/en/about-us/news/news>
  - g. Announcements: <https://me.emu.edu.tr/en/about-us/news/announcements>
2. Facilities: <https://me.emu.edu.tr/en/facilities>
  - a. Laboratories: <https://me.emu.edu.tr/en/facilities/laboratories>
  - b. Library: <https://me.emu.edu.tr/en/facilities/library>
3. ABET: <https://me.emu.edu.tr/en/abet>
  - a. Program Educational Objectives: <https://me.emu.edu.tr/en/abet/program-educational-objectives>
  - b. Student Outcomes: <https://me.emu.edu.tr/en/abet/student-outcomes>
  - c. Enrollment Statistics: <https://me.emu.edu.tr/en/abet/enrollment-statistics>
  - d. Mission and Vision: <https://me.emu.edu.tr/en/abet/mission-and-vision>
4. Programs: <https://me.emu.edu.tr/en/programs>
  - a. Programs Handbook: <https://me.emu.edu.tr/en/programs/programs-handbooks>
  - b. Programs Description and Curriculum:
    - i. BS Mechanical Engineering <https://me.emu.edu.tr/en/programs/under-graduate/mechanical-engineering>
    - ii. BS Mechatronics Engineering <https://me.emu.edu.tr/en/programs/under-graduate/mechatronics-engineering>
    - iii. BS Energy Systems Engineering <https://www.emu.edu.tr/en/programs/energy-systems-engineering-undergraduate-program/1793>

- iv. BS Mechanical Engineering - Industrial Engineering Double Major Program: <https://me.emu.edu.tr/en/programs/under-graduate/mechanical-engineering-industrial-engineering-double-major>
- v. BS Mechanical Engineering - Mechatronics Engineering Double Major Program: <https://me.emu.edu.tr/en/programs/under-graduate/mechanical-engineering-mechatronics-engineering-double-major>
- vi. BS Mechatronics Engineering - Mechanical Engineering Double Major Program: <https://me.emu.edu.tr/en/programs/under-graduate/mechatronics-engineering-mechanical-engineering-double-major>
- vii. BS Industrial Engineering - Mechanical Engineering Double Major Program: <https://me.emu.edu.tr/en/programs/under-graduate/industrial-engineering-mechanical-engineering-double-major>
- viii. BS Electrical and Electronic Engineering - Mechatronics Engineering Double Major Program: <https://me.emu.edu.tr/en/programs/under-graduate/electrical-and-electronic-engineering-mechatronics-engineering-double-major>
- ix. MS Mechanical Engineering: <https://me.emu.edu.tr/en/programs/graduate/ms-master-of-mechanical-engineering-with-thesis>
- x. PhD Mechanical Engineering: <https://me.emu.edu.tr/en/programs/graduate/phd-mechanical-engineering>
- c. Semester Course List: <https://me.emu.edu.tr/en/programs/courses>
- d. Course Descriptions:
  - i. Mechanical Engineering <https://me.emu.edu.tr/en/programs/under-graduate/mechanical-engineering>
  - ii. Mechatronics Engineering: <https://me.emu.edu.tr/en/programs/under-graduate/mechatronics-engineering>
  - iii. Energy Systems Engineering <https://www.emu.edu.tr/en/programs/energy-systems-engineering-undergraduate-program/1793>
- 5. Students: <https://me.emu.edu.tr/en/students>
  - a. Prospective Students: <https://me.emu.edu.tr/en/students/prospective-students>
  - b. Student Services: <https://me.emu.edu.tr/en/students/student-services-office>
  - c. Student Portal: <https://me.emu.edu.tr/en/students/student-portal>
  - d. Graduation Procedures: <https://me.emu.edu.tr/en/students/graduation-procedures>
  - e. Registrar EMU : <https://me.emu.edu.tr/en/students/registrars-office>
  - f. Academic Calendar: <https://me.emu.edu.tr/en/students/academic-calendar>
  - g. Honor and High Honor List: <https://me.emu.edu.tr/en/students/honor-and-high-honor-list>
  - h. Psychological Counseling Guidance and Research Center: <https://me.emu.edu.tr/en/students/psychological-counseling-guidance-and-research-center>
  - i. Alumni Communication and Career Research Directorate: <https://me.emu.edu.tr/en/students/alumni-communication-and-career-research-directorate>
- 6. Industrial Training: <https://me.emu.edu.tr/en/industrial-training>
- 7. Capstone Team Projects: <https://me.emu.edu.tr/en/capstone-design-projects>
- 8. Research <https://me.emu.edu.tr/en/research>
  - a. Research Centers: <https://me.emu.edu.tr/en/research/research-centers>
  - b. Research Interests: <https://me.emu.edu.tr/en/research/research-interests>
  - c. Research Assistants: <https://me.emu.edu.tr/en/research/research-assistants>
- 9. COVID-19 Action Plan and Guidelines : <https://me.emu.edu.tr/en/covid19-action-plan-and-safety-guidelines>
- 10. The Department has also recently established the following social media accounts:
  - LinkedIn: <https://www.linkedin.com/school/emu-mechanical-engineering-dept/>
  - YouTube: [https://www.youtube.com/channel/UCarSun8\\_dV4tcwWzO1Npsg](https://www.youtube.com/channel/UCarSun8_dV4tcwWzO1Npsg)
  - Twitter: <https://twitter.com/mesocial9>
  - Instagram: [https://www.instagram.com/emu\\_mechanical\\_department/](https://www.instagram.com/emu_mechanical_department/)

## 2- STAFF

### 2.1. Academic Staff of Mechanical Department

#### Full Time Faculty Members



#### **Murat ÖZDENEFE**

**Chair of the Department, Associate Professor of Mechanical Engineering.** Dr. Özdenefe gained his BSc. from Mechanical Engineering Department, Çukurova University. Dr. Özdenefe then received his MSc. in Mechanical Engineering Department, Eastern Mediterranean University. He completed His PhD in School of Mechanical, Aerospace and Civil Engineering, The University of Manchester with the PhD. project "Phase Change Materials and Thermal Performance of Buildings in Cyprus". Dr. Özdenefe's research interests are: Building Heat Transfer, Building Thermal Performance Simulation, Phase Change Materials, Energy Auditing, Passive Buildings.

Extension No: 1210; Office No: ME 201A | E-mail: [murat.ozdenefe@emu.edu.tr](mailto:murat.ozdenefe@emu.edu.tr)



#### **Devrim AYDIN**

**Vice Chair of the Department, Associate Professor of Mechanical Engineering.** Dr. Aydin gained his BSc. and MSc. from Mechanical Engineering Department, Yıldız Technical University. He completed His PhD. in Institute of Sustainable Energy Technology, Engineering Faculty, The University of Nottingham with the PhD. project "Investigation of innovative thermochemical energy storage processes and materials for building applications". Dr. Aydin's research interests are: Thermal energy storage, adsorption/absorption materials and processes, evaporative cooling, desiccant systems, power cycles, low carbon buildings, drying systems, solar energy systems and water harvesting technologies.

Extension No: 1045 ; Office No: ME 127; | E-mail: [devrim.aydin@emu.edu.tr](mailto:devrim.aydin@emu.edu.tr)



#### **Uğur ATIKOL**

**Professor of Mechanical Engineering.** Dr. Atikol is a Professor of Mechanical Engineering. He received his B.S degree from the University of Leicester and M.Sc. degree from the University of Manchester. He completed his Ph.D. in Eastern Mediterranean University. Dr. Atikol's research interests are Energy Management, Planning and Utilization, Solar Energy and Desalination. He has been the director of EMU Energy Research Center since 2004.

Extension No: 1247; Office No: ME 144 | E-mail: [ugur.atikol@emu.edu.tr](mailto:ugur.atikol@emu.edu.tr)



#### **Hasan HACISEVKI**

**Professor of Mechanical Engineering.** Dr. Hacisevki received his B.S, M.S and Ph.D. degrees from Eastern Mediterranean University. Dr. Hacisevki's research interests include Experimental studies in Fluid Dynamics, Automotive Engineering and Mechanical Design.

Extension No: 1542; Office No: ME 124

E-mail: [hasan.hacisevki@emu.edu.tr](mailto:hasan.hacisevki@emu.edu.tr)



#### **Qasim ZEESHAN**

**Professor of Mechanical Engineering.** Dr. Qasim Zeezhan received his B.E. Mechanical Degree from National University of Sciences and Technology (NUST), Pakistan. He received his MS and PhD in Flight Vehicle Design from Beihang University (BUAA), China. His research interests include Aerospace Vehicle Design, Multidisciplinary Design and Optimization (MDO), Manufacturing Systems Engineering, Industry 4.0, Machine Learning and application of Modern Meta-Heuristic Optimization Techniques, and Composite Materials.

Extension No: 1361; Office No: ME 141 | E-mail: [qasim.zeezhan@emu.edu.tr](mailto:qasim.zeezhan@emu.edu.tr)



#### **Babak SAFAEI**

**Associate Professor of Mechanical Engineering.** Dr. Babak Safaei is director of Nanotechnology and Multifunctional Structures Research Center (NMSRC) at Eastern Mediterranean University. He also has an honorary position as Visiting Associate Professor at University of Johannesburg, South Africa. He received his PhD. degree in Mechanical Engineering from Department of Mechanical Engineering at Tsinghua University. His research interests focus on Computational Mechanics; Micro and Nano Mechanics; Advanced Manufacturing; Design of Lightweight Structures; Composite and Nano Composite Materials; Lithium-Ion Batteries, Nonlocal Theories and Mechanical Vibration.

Extension No: 2381; Office No: ME 120 | E-mail: [babak.safaei@emu.edu.tr](mailto:babak.safaei@emu.edu.tr)



#### **Cafer KIZILÖRS**

**Lecturer in Mechanical Engineering.** Dr. Cafer Kizilörs received his B.S, M.Sc. and PhD degrees from Eastern Mediterranean University. His current research interests include Statics, Dynamics, Fracture Mechanics and Materials.

Extension No: 1352; Office No: ME 200B

E-mail: [cafer.kizilors@emu.edu.tr](mailto:cafer.kizilors@emu.edu.tr)



## Emeritus Faculty Members



### ***Fuat EGELIOĞLU***

**Professor Emeritus of Mechanical Engineering.** Dr. Egelioglu received his B.S degree from Bogazici University and received his M.Sc. and Ph.D. degrees from Eastern Mediterranean University. His research interests include Energy Savings, Renewable Energy and Energy Conversion.  
Extension No: 1354; Office No: ME 117  
E-mail: fuat.egelioglu@emu.edu.tr



### ***Ibrahim SEZAI***

**Professor Emeritus of Mechanical Engineering.** Prof. Sezai received his B.Sc. and M.Sc. degrees from Middle East Technical University, and second M.Sc. from UMIST, University of Manchester, UK. Furthermore, he received his Ph.D. from Eastern Mediterranean University. Prof. Sezai's current research interests include Computational Heat and Fluid Flow, Solar Energy, Flow through Porous Media and Crystal Growth.  
Extension No: 1222; Office No: ME 126  
E-mail: ibrahim.sezai@emu.edu.tr

## Part Time Faculty Members



### ***Barış HACIŞEVKI***

**Part time Lecturer in Mechanical Engineering.** Barış Hacışevki was born in Nicosia/Cyprus. He completed his high school education at Turk Maarif College. Later, he completed Bachelor's Degree in Mechanical Engineering at Eastern Mediterranean University. After a short job experience as a sales engineer at Borusan Oto, he moved to the UK to study for a postgraduate degree in Engineering Business Management. Succeeding the postgraduate degree, he moved back to Cyprus to work for Cypri-Cola Company. His role was production and maintenance engineer for the Coca-Cola production plant. Lastly, he left the Cypri-Cola Company in order to start his engineering design office. His area of work consists of the design of plumbing and HVAC systems for the buildings. He is currently a board member and treasurer at Cyprus Turkish Chamber of Mechanical Engineers.  
Extension No: 1353; Office No: ME 125  
E-mail: baris.hacisevki@emu.edu.tr

## 2.2. Teaching Assistants of Mechanical Department

Name	Office No.	Extension	Email
AYŞEGÜL GAZİOĞLU	CE244	1279	<a href="mailto:aysegul.gazioglu@emu.edu.tr">aysegul.gazioglu@emu.edu.tr</a>
EMMANUEL CHUKWUELOKA ONYIBO	ME019	2598	<a href="mailto:emmanuel.onyibo@emu.edu.tr">emmanuel.onyibo@emu.edu.tr</a>
ERFAN MALEKIAN NOBARANI	ME023	1347	<a href="mailto:erfan.nobarani@emu.edu.tr">erfan.nobarani@emu.edu.tr</a>
GARSHASP KEYVAN SARKON	CE136	1160	<a href="mailto:23600110@emu.edu.tr">23600110@emu.edu.tr</a>
HUSSAIN ALI FARAJ MOHAMMED SHAWISH	ME025	1089	<a href="mailto:hussain.shawish@emu.edu.tr">hussain.shawish@emu.edu.tr</a>
MAHMOUD NOURELDIN AHMED MAHMOUD	CE138	1066	<a href="mailto:24500411@emu.edu.tr">24500411@emu.edu.tr</a>
OSINACHI MBAH	ME019	2598	<a href="mailto:osinachi.mbah@emu.edu.tr">osinachi.mbah@emu.edu.tr</a>
YASSEER HAMED HAMED ELMOGHAZY	ME200A	1614	<a href="mailto:yasser.elmoghazy@emu.edu.tr">yasser.elmoghazy@emu.edu.tr</a>
ZUMMURD ATEF MUHAMMAD AL MAHMOUD	ME017	2590	<a href="mailto:zummurd.mahmoud@emu.edu.tr">zummurd.mahmoud@emu.edu.tr</a>

## 2.3. Administrative and Technical Staff

Name	Office No.	Extension	Email
Çiğdem ONUREL	ME 201	1210	<a href="mailto:cigdem.onurel@emu.edu.tr">cigdem.onurel@emu.edu.tr</a>
Ekrem CENGİZOĞLU	CL OFIS	2487	<a href="mailto:ekrem.cengizoglu@emu.edu.tr">ekrem.cengizoglu@emu.edu.tr</a>
Zafer MULLA	ME 008	1248	<a href="mailto:zafer.mulla@emu.edu.tr">zafer.mulla@emu.edu.tr</a>
Hasan EGELİOĞLU	ME 116	2592	
Habibe ÖĞÜT	ME 007	2185	
Zehra EKİZ	ME 007	2185	

## 2.4 Academic Staff of Electrical & Electronics Department

Name, Surname	Duty	Office	Tel	Email
<i>Prof. Dr. AYKUT HOCANIN</i>	Rector	EE 208	1201	aykut.hocanin@emu.edu.tr
<i>Prof. Dr. ERHAN İNCE</i>	Faculty Member	EE 236	2778	erhan.ince@emu.edu.tr
<i>Prof. Dr. HASAN DEMİREL</i>	Vice Rector	EE107	1580	hasan.demirel@emu.edu.tr
<i>Prof. Dr. HÜSEYİN ÖZKARAMANLI</i>	Dean	EE 105	2776 / 1381	huseyin.ozkaramanli@emu.edu.tr
<i>Prof. Dr. MUSTAFA KEMAL UYGUROĞLU</i>	Faculty Member	EE 135	1433	mustafa.uyguroglu@emu.edu.tr
<i>Prof. Dr. OSMAN KÜKRER</i>	Faculty Member	EE 205	1304	osman.kukrer@emu.edu.tr
<i>Prof. Dr. RUNYI YU</i>	Faculty Member	EE 206	1382	runyi.yu@emu.edu.tr
<i>Prof. Dr. ŞENER UYSAL</i>	Faculty Member	EE 218	2772	sener.uyosal@emu.edu.tr
<i>Assoc. Prof. Dr. RASİME UYGUROĞLU</i>	Chair	EE 202 / EE 203	1300	rasime.uyguroglu@emu.edu.tr
<i>Assist. Prof. Dr. DAVUT SOLYALI</i>	Vice Dean	EE 238	1432 / 2855	davut.solyali@emu.edu.tr
<i>Assist. Prof. Dr. HASSAN ABOU RAJAB</i>	Faculty Member	EE 109	1498	hassan.rajab@emu.edu.tr
<i>Assist. Prof. Dr. SHAHLA AZIZI ALIKAMAR</i>	Faculty Member	EE215	1440	shahla.alikamar@emu.edu.tr

## 2.5. Teaching Assistants of Electrical & Electronics Department

Name and Surname	Office No.	Office Tel.
<i>Fuat UYGUROĞLU</i>	EE 209	1434
<i>Masoud MORADI</i>	EE 211	1308
<i>Gülay KARATAŞ</i>	EE 210	1305
<i>Safa AWADALLAH</i>	EE 240	1093
<i>Dan Eyo DAN-ABIA</i>	EE 110	2775
<i>Ariyan Roshany TABRIZI</i>	EE 212	2050
<i>Arya SABOURY</i>	EE 108	1309
<i>Alireza DABIRY</i>	EE 213	1449
<i>Mahmoud AKEL</i>	EE 111	1384
<i>Doğu MANALI</i>	EE 113	1454
<i>Ousamma EL SALIBI</i>	EE 114	1306
<i>Wasem Qassab BASHI</i>	EE 114	1306

## 2.6. Administrative and Technical Staff of Electrical Department

Name and Surname	Office No.	Office Tel.
<i>Yeliz N. EVGİNEL</i>	EE 203	1301
<i>Cem CENGİZ</i>	EE 008	2783
<i>Hatun IRMAK</i>	EE 112	1659
<i>Hanım ULUDAĞ</i>	EE 112	1659
<i>Hülya İNCİ</i>	EE 112	1659
<i>Yunus TOYGARCA</i>	EE 010	1445

## 3- FACILITIES

### MECHANICAL ENGINEERING DEPARTMENT

Main building of the Mechanical Engineering Department was built in 1982 initially as a single floor building. The upper two floors have been added later in 1992. The upper two floors are mainly used for classrooms, staff offices and administrative offices. Also, there is a Restaurant located on ground floor for serving students and staff. Mostly during first and second year of undergraduate engineering education in Mechanical Engineering Program, students are required to take mathematics, basic science and other engineering as well as general education courses. These courses are offered by other departments which have separate buildings within the campus. Mechanical Engineering Department's Building is approximately (about 2000 m<sup>2</sup> floor are. The Mechanical Engineering building includes the following facilities:

- 28 staff and assistant offices
- 11 Experimentation laboratory
- 5 Classrooms
  - ME111, ME112, ME113, ME114 and ME115
- 2 Computer laboratories (ACAD 1 and ACAD 2)
- 1 Seminar room (MESEM 1)
- 1 Amphitheater (MESEM 2)
- 1 Mechanical Workshop and workshop office
- 1 ASME student union room
- 1 Capstone Project study room
- 1 Secretarial/administrative office
- 1 Archive room
- 1 Department chair office
- 1 Building admin office
- 1 Department Library
- 1 Restaurant

#### Offices, Classrooms and Laboratories

Main building of the Mechanical Engineering Department was built in 1982 initially as a single floor building. The upper two floors have been added later in 1992. The upper two floors are mainly used for classrooms, staff offices and administrative offices. Also, there is a Restaurant located on ground floor for serving students and staff. Mostly during first and second year of undergraduate engineering education in Mechanical Engineering Program, students are required to take mathematics, basic science and other engineering as well as general education courses. These courses are offered by other departments which have separate buildings within the campus.

#### Offices (Administrative, Faculty, Clerical, Teaching Assistants)

On ground floor there are twelve fully equipped and air conditioned offices for assistants. The department research assistants are the current graduate students. Their offices are equipped with individual modern computers with network connection and air conditioning facilities. Also, free Wi-Fi services are also provided inside and outside the building. All computers are connected to the central printing machine of the department. These offices are provided with large desks, office chairs and bookshelves.

Cleaners and workshop technicians are also located on ground floor. There is one office for student union (ASME club) and one for EMU's Academic union.

On the first floor there are ten individual offices for the faculty members and two rooms for ABET documentation. These offices are furnished with a large desk, one ergonomic office chair, two or more visitor chairs and a large bookshelf. The bookshelves are sufficiently large to take course textbooks, and research documents. Two large lockers underneath the shelves provide safe area for exam papers and questions whenever necessary. Each office is equipped with a phone, at least with a notebook and/or desktop PC, a tablet for conducting online courses, and a network connection with printing facility through central printing machine. Some faculty member offices are equipped with individual printers and scanners. Faculty members arrange meetings with their colleagues, students, and assistants for advisory, supervisory, or one-to-one teaching purposes conveniently in their offices without loss of time to search a safe and private room in the building. On second floor there are two tower rooms. One of which is for department administration where there is one office for Chairperson and one for Department's secretary and one for collecting department documents. The other one is split into three faculty member offices.

#### Classrooms

There are five lecture rooms located at first floor level. All classrooms are equipped with network connection and a data projector. These classrooms are named as ME111, ME112, ME113, ME114 and ME115. They are also offered to other departments, in particular to the Computing & Technology and English literature departments. There are two Seminar rooms equipped with video projection and audio facilities. These rooms are named as MESEM1 and MESEM2. MESEM2 is used for lecturing, seminars and award ceremonies. There are two computer rooms named as ACAD1 and ACAD2. These rooms are used as classrooms for computer based classes, computer laboratory sessions or when available as computer facilities for the students.

#### Laboratories

The Mechanical Engineering Department is well equipped with laboratory equipment and facilities for undergraduate experimentation and/or demonstrations. Some of these laboratories are also used for graduate courses and research purposes as well. The total floor area allocated for laboratories is about 1360 m<sup>2</sup>. With the addition of about 110 m<sup>2</sup> computer lab spaces and 390 m<sup>2</sup> of mechanical workshop, the total reaches to about the half of the total building area.

#### Mechanical Workshop – ME008

The Department's workshop include well-equipped machines. The workshop also has designated working stations for sheet metal and welding tasks. The workshop is equipped with various size of lathes, milling machines, drilling machines, surface and cylindrical grinding machines and tool grinding machine. The welding shop has a number of arc and gas welders including Arc and TIG/MIG welding and spot-welding sets. Oxy-acetylene welding set and plasma cutter do exist too. These stations are available for use by students and staff under supervision. Also, there is a precise temperature controlled 1200 °C electric furnace for heat treatment purposes.

### **Mechanics of Materials Laboratory – ME014**

This laboratory contains more than 20 different student units, allowing various experimentations on both frames and structures, and on stress analysis. The equipment list includes: combined bending and torsion apparatus, torsion testing machine, strut buckling apparatus; thin and thick walled cylinder apparatus, polariscope with test models, universal testing and electronic tensile testing machines, dilatometer equipment, creep and stress rupture testing machine, and several other auxiliary equipment involving experimental stress analysis through electrical strain gauges. The equipment related to static analysis of beams and structures include apparatus for conducting experiments such as: bending moment, shearing force and influence line; continuous beam; frames and structures; elastic beams; reaction of beams; deflection of beams; and two-hinged arch. Kinematics and dynamics laboratories also share the laboratory space.

The main student units for experimentation in the dynamics section of the laboratory include: universal bench for forced and free vibration tests, centrifugal force, slipping friction, journal friction, gyroscope, conservation of angular momentum, plate clutch friction, compression of springs, extension of springs, cam analysis machine, and Coriolis component of acceleration apparatus. On the kinematics side, there are some 40 ‘working model’ pieces that can be used to demonstrate some fundamental principles of kinematics, such as guidance of motion through constraints, motion and path generation, and functioning of some common linkage mechanisms, geared mechanisms, and cam mechanisms. The Universal tensile testing equipment in the Mechanics of Materials laboratory is used for standard tests required by industry and construction companies.

### **Advanced Composite Laboratory – ME016**

This laboratory is newly established and equipped laboratory of the department. This laboratory will give service to research projects and to area elective courses to a certain extent. Facilities available in this laboratory for experimentation and demonstration to undergraduate students include: a CNC Milling machine, a vacuum machine for composite part production, a 3D composite printing machine and a 3D scanner.

### **Aerodynamics Laboratory – ME017**

This laboratory has two subsonic wind tunnels, an air flow bench, complete with air flow test sets, 3 off TSI Flowpoint 1500 velocity transducers total 6 channels Hot Wire Anemometry and measuring system, a hotwire probe soldering bench, a probe calibration apparatus, viewing and recording instruments, enabling to perform various aerodynamic tests and compressible fluid flow experiments. The larger wind tunnel (50 cm x 50 cm test section) completely designed and constructed as a Master’s thesis project, under the supervision of two Mechanical Engineer’s departmental academics. This tunnel enables the use of reasonably larger test models. The large wind tunnel may reach up to 30 m/s and small wind tunnel reaches up to 50 m/s free stream velocities. The laboratory is adequate for both undergraduate and graduate studies and research.

### **Fluid Mechanics and Automotive Laboratory – ME020**

The Fluid Mechanics laboratory has a number of set-ups for the demonstration and study of basic fluid mechanics principles. These include experimental apparatus such as: flow measuring, boundary layer experiment set up, center of pressure, free and forced vortex, friction losses in pipe bends, calibration of pressure gauge sets, dynamic behavior of stirred tanks, orifice flow, impact of water jets, stability of floating bodies, minor and major loss measuring test rigs and a bench for the measurement of properties of liquids and gases. Most of the equipment is generally well maintained, and adequate for undergraduate courses.

The laboratory also contains Francis and Pelton turbine systems, axial and radial flow pump systems, centrifugal pump system, a Pelton Impact Turbine with friction brake system, a gravimetric hydraulics bench unit, and various sizes of other pumps for demonstration and experimentation, also impact of jet test rigs are present. Series and Parallel pump systems were equipped with digital pressure sensors and flow measuring devices and computerized by Master students. The use of the automotive laboratory in undergraduate courses is limited to the demonstration of I.C. engines and vehicle components such as chassis and body structures, steering and suspension systems, axles, braking systems with ABS, cooling systems, air-bag safety system, electronic components, sensors and actuators, automotive A/C system, gearbox and differential units and different gasoline injection and diesel engines. The Automotive Laboratory, on the other hand, is well equipped to conduct experiments such as performance tests on both two and four stroke petrol and diesel engines test rig, as well as studying the effects of timing and compression ratio of petrol and diesel engines on specific fuel consumption.

In terms of demonstration purposes, two car engines were modified and updated by the capstone team project groups. One Austin Mini engine is converted to Electronic ignition, Electric fan cooling and downdraught carburetion. The second engine was converted to electric fan cooling and a turbo charger was installed to increase output power.

### **Manufacturing, Materials Science and Metrology Laboratory – ME024**

The Manufacturing section of the laboratory contains a universal tensile testing machine, ultrasonic plastic welding machine, plastic extrusion machine, automatic metallurgy cutting machine, CNC Compact 3 Axis Milling Machine, CNC Engraving Machine.

The laboratory has also testing facilities for determining various properties of engineering materials, such as strength, hardness. The equipment available includes: metallurgical microscopes, hardness tester, impact tester, and tensile testing machines; other equipment is also available for corrosion studies, carbon content determination, and a machine for the measurement of creep. The auxiliary equipment includes universal polisher, electric furnaces, notching machine, compressor and various accessories. The sand casting equipment with mechanical sieve shaker, sand mixer, sand rammer, density indicator, permeability meter, universal sand strength machine, rapid sand washer, speedy moisture tester and alike. This equipment is also utilized in simple sand-casting applications in workshop practices.

Metrology portion of the laboratory enables roundness, flatness, and straightness tests; and the performance of checks on the accuracy of measuring instruments and machine tools. Optical instruments such as auto-collimators, angle-dekkors, interferometers, the alignment telescope, and the measuring microscope, are also available for experimentation. The laboratory is well equipped with numerous measuring instruments and slip gauges, and is quite adequate for instruction. The laboratory space is completely isolated and fully air conditioned for dust, humidity and temperature control.

### Thermal Sciences Laboratory – ME025

This laboratory contains test and demonstration equipment on heating, thermodynamics, air conditioning and solar energy, ranging from small scale to large scale. Some benches are modular and allow connection of different modules for comparative studies. The student units in this laboratory include: Marcet boiler, absolute zero temperature apparatus, air conditioner laboratory unit, an experimental cooling tower, thermal radiation apparatus, force convection apparatus, thermal conductivity apparatus, and other auxiliary equipment such as data acquisition systems, heat flux sensors, thermocouples, etc. There are also two units of Photovoltaic-Thermal (PV/T) training sets. Many new experimental test rigs with digital data acquisition systems were also purchased within last year. Some of these equipment are: heat recovery type air conditioning training test kit, water to water type heat pump training set, Universal IAQ instrument + air velocity and IAQ probes and U value measurement kit.

### Automation - I Laboratory – ME029

Experimental set ups existing in Automation – I laboratory are used in Mechatronics Engineering Program. The equipment includes: PLC Trainer Set and Compact Flexible Process Line. The model Flexible Process Line with one machine tool simulates a flexible manufacturing line with one machine tool, as used for example in serial production of line of carrying cube box. Multiple PLC trainer sets are available for students to practice the design and implementation of ladder logic programs to hardware (PLC system). The equipment includes: Intel i3 Computer Stations (x10), PLC-Trainer AC500 with CPU and programming software.

### Automation - II Laboratory – ME028

Automation – II laboratory is used for undergraduate and graduate studies, as well as research. The lab includes a conveyor system where two robotic arms and RFID based Automated Storage and Retrieval System (AS/RS) integrated to the system. One robot is PLC controlled. The equipment includes: Robot Arm, Robotica, Conveyor with Flexible Transport Components, Genba; Modicon TSX 37 Micro PLC, Telemechanique, Barcode Reader, SIEMENS PLC, SCARA Robot Arm.

### Computing resources

The ME department building has LAN and wireless network facilities. Department have two computer laboratories and all computers are open to serve students, from 08:00 am in the morning until 17:00 p.m. All Department students have passwords to access their Student Portal; and use the internet. Computer laboratories are in very good condition for supporting the educational objectives and outcomes of the program. LAN services are provided by the University's Computer Center. It is located in a central building in campus. The Computer Center supplies all the server-system services that help provide academic and administrative functions as well as Intranet and Internet services. All EMU members have a lifelong right to access Internet services like e-mail, web, ftp and the like. The Computer Center has Campus License Protocols with well-known software companies. All buildings on campus are connected to the central switch over Gigabit Ethernet. Each building has network switches connecting the end users, which are either connected directly to the center or a main switch at the building. There are about 6000 end users on campus. About 5000 of these are active at one time. The campus network includes wireless networks at various locations. The Center has important engineering and business software packages. The Center offers professional training to the University members or to external bodies. The center is also an authorized training center for CNAP, Microsoft IT Academy and ECDL programs and Pearson Vue, Prometric and ECDL certification center

### Computer Laboratories within the department

The Department has two computer laboratories, which are mainly used for undergraduate studies. These are called AutoCAD Laboratories and also serving as Internet laboratory. Computer laboratories are also used for Solid Works application. The Student Computer Laboratories have total 56 terminal based modern computers. The AutoCAD Laboratories are used primarily for computer programming, engineering graphics, engineering drawing and computer aided design courses. The Internet laboratory is allocated for the general computer needs of the students, which may include access to the Internet; writing of laboratory reports, homework, engineering graphics drawing assignments, and project reports. There are different number of softwares used in computer laboratories and by staff of the Department. Software updates are done usually during at the end sessions of semesters. All faculty members and assistants have modern computers installed together with necessary software to help support their instruction and other scholarly activities. They can use cable or wireless network services supplied by the university. In each classroom is supported with a modern computer, a data projector in order to support delivery of lecture courses. All these computer facilities are utilized towards achieving the outcomes of courses, and the educational objectives of the program, which may at different levels for each different course. Students are also encouraged to prepare their presentations with Microsoft PowerPoint and use Microsoft Word and Excel to prepare their laboratory reports; or to draw charts or graphs for their assignments. All the software such as AutoCad, SOLID WORKS, ANSYS, MATLAB MS OFFICE etc. necessary to meet the curriculum requirements is supplied by the University's Computer Center.

### Department's Library and Study Room

The Department library is located in the ground floor corridor. The books have been acquired over the years from the donors and faculty. The library is open Monday through Friday from 8:00 am to 5:00 pm. There is a collection of more than 330 textbooks in the areas of engineering, mathematics and science and copy of all Capstone projects. The collection also contains around 100 M.S. thesis and Ph.D. dissertation reports of mechanical engineering graduates. Undergraduate, graduate students and staff can borrow these sources for a certain time period under control of library assistant. All staff and students may also use all facilities of main university library.

## ELECTRICAL & ELECTRONICS ENGINEERING DEPARTMENT

The Electrical and Electronic Engineering Department houses a total of 48 Offices evenly distributed in two floors. These offices have three different sizes. Half of them have an area of 13.37 square meters each, 16 have 15.23 and 8 have 18.5; total office area is 712.56 square meters. Faculty members, evenly distributed in two floors, have offices of their own. Offices are well equipped with the latest computing facilities, an office table, 3 chairs and cabinets. Two Teaching Assistants (MS) share one office and Category A Ph.D. assistants have offices of their own. These offices are also well equipped with computing facilities and office furniture. The Chairman has a bigger office (46.43 square meter) and is well equipped with computing and other state-of-the-art facilities. There is a 10-seat meeting table and cabinets for documents. The secretary office (20.73 square meters) is located next to the Chairman's office and they have a common entrance. These are located in the second floor. The building has two meeting rooms located in the first floor. The smaller one (64.30 square meters) is also used as a staff common room for daily activities, departmental committee meetings (e.g., Postgraduate Committee, Lab committee, etc.) are also held in this room. The second meeting room (82.60 square meters) is used for Departmental Council and ABET Committee meetings.

### Classrooms

There are a total of 10 classrooms (all newly refurbished in Summer of 2021 – a sample is shown in Figure 7-1) in the Electrical and Electronic Engineering Department. Refer to Table 7-1 for details. Seven of these classrooms have multi-media facilities used for teaching. The ANFI Theater of the department has a capacity of 150 seats and is mainly used for seminars, presentations, award ceremonies and occasionally as a classroom for teaching. A Departmental/IEEE-Student Branch (IEEE-SB) library facility is available for the use of students, with a collection of all IEEE magazines subscribed as the IEEE-SB. Various other books and journals are available mostly through departmental collection and/or donations from individuals. A photocopy machine is available within the Library for copying articles for study and project development. A copy of each Undergraduate Graduation Project report is held in the Departmental Library together with a copy of the M.S. and Ph.D. theses prepared in the Department.

### Laboratories

There are a total of 16 laboratories in the Departmental Building used for undergraduate courses as well as research projects. In addition to the standard laboratories a dedicated workshop is provided for the implementation of the Graduation Design Projects of senior students.

#### *Undergraduate Computer Laboratory*

Provides facilities for undergraduate computer-based courses. It also provides a wide range of computer-based tools to students for their various computing needs in courses and projects. This laboratory is equipped with 53 personal computers connected to a network with file and print servers providing shared resources. The personal computers are in very good condition and adequate for performing PC based experiments in computing courses. There are a total of 53 stations housed in three different rooms: EE 117, EE 118 and EE 119.

#### *Logic Circuit Design and Microprocessors Laboratory*

This laboratory serves two main courses:

1. Logic Circuit Design: This laboratory is used for teaching the fundamentals of combinational and sequential logic circuits. The equipment includes a logic analyzer, several boards with power supplies, clock generators and LED displays.
2. Microprocessors: This laboratory provides facilities for performing experiments on microprocessors and single-board microcomputers. The equipment includes several evaluation kits based on the 8086 microprocessor, suitable both for software and interfacing experiments, and also 80386 based PC/AT interface experimental tools and micro-controller evaluation boards. The kits incorporate EPROM programmers, parallel and serial input/output ports, keyboard and displays. Three units based on the 8085 microprocessor are also available for experiments and with several real-time control application examples. Currently 20 Personal Computers with Intel Pentium Processors are used as the platform for the laboratory experiments running Turbo Assembler Software to teach Assembly Language to the students.

#### *Basic Circuits Laboratory*

This laboratory is used to familiarize students with the fundamental laboratory procedures of electrical measurements. In addition to demonstrating the uses of voltmeters, ammeters, watt-meters, signal generators and oscilloscopes, experiments are designed to illustrate basic electrical circuit theory concepts for linear and non-linear DC circuits, simple time-invariant circuits, and single-phase and three-phase linear AC circuits. The equipment and instrumentation are sufficient to serve its purpose. The experiments are conducted in groups of two students under the supervision of an assistant.

#### *Electronics Laboratory*

Well equipped for undergraduate electronics experiments, this laboratory is used to familiarize students with electronic devices, amplifiers and analogue and digital electronic circuits. It also provides facilities for undergraduate and graduate research projects.

#### *Electrical Machines Laboratory*

This laboratory is equipped for experiments on all types of rotating AC and DC machines, stepper motors, universal motors and single- and three-phase transformers. Facilities are available for testing and measuring motor characteristics. Several types of generalized machine sets are available for undergraduate and graduate research studies.

#### *High Voltage Laboratory*

High Voltage laboratory serves as an independent, non-industrial university center for high voltage engineering. The mission of the laboratory includes research, evaluation, testing and education activities. The laboratory is equipped with 100 kV, 5 kVA test transformer; 100 kV, 5 kVA, 50 Hz AC test set; 140 kV, 20 mA DC test set; several electrostatic generators; a spark gap Tesla Coil; measurement and control desk.

#### *DSP and Multimedia Laboratory*

The DSP laboratory is intended to serve the undergraduate students in their courses and project related work. The laboratory is designed to provide services to students in two groups. These are the Signals and Systems course, which is a core course and Digital Signal Processing, which is a Selective Core Course. The laboratory will enable the students in these classes to acquire data (image, speech etc.) in digital format and provide them with the means to process their data using software and hardware tools (TMS320C6711, MATLAB ® or C programming).

#### *Control Systems Laboratory*

Provides experimental facilities to help students grasp the theory and applications of feedback control systems. The equipment includes electro-pneumatic sets, electro-hydraulic sets, servo systems, a computer based servo fundamental training system, DC servo mechanism and other electronic apparatus that can be used as basic elements to construct open- or closed-loop systems of various orders. The set-up allows for a number of experiments to demonstrate techniques of system modeling, analysis and design in control engineering.



**Power Electronics Laboratory**

This laboratory is equipped with several sets and rectifier/inverter units suitable for undergraduate power electronics experiments.

**Telecommunications Laboratory**

This laboratory is equipped with analog and digital communication kits, measuring instruments, signal generators and analyzers for undergraduate courses. There are also many HF to UHF frequency range transmitters and receivers.

**Opto-Electronics Laboratory**

This laboratory is designed to serve both undergraduate and research students. Facilities are available for thin-film and thick-film works by vapor deposition, photo-voltaic cells, modules and controllers. In addition, the laboratory is equipped with a laser demonstration set. The laboratory is also designed for research and pilot production of light-emitting display panels and photo-voltaic cells. The existing equipment and instrumentation are in good condition to support teaching. This laboratory is also used to design and build printed-circuit boards for graduation design projects under the supervision of the Department's electronic technician (Mr. Cem Cengiz).

**Computer Research Laboratory**

Housing the departmental local area network server this laboratory is intended to provide a general-purpose research center with wider computational facilities.

**Research Laboratory:** This laboratory is mainly intended to be used by non-assistant postgraduate students.

**High Frequency Research Laboratory**

This laboratory houses several equipment (antennas, IR cameras, etc.) and various components used in the modeling and design of communication links at microwave frequencies.

**Solar Energy Research Laboratory**

This laboratory is used to record solar data obtained from an experimental set-up of solar panels installed on the rooftop of the EEE Dept. building. There are also three sets of solar power supplies (10, 20 and 40 Watts) regularly used by students.

**Microwave and Antenna Laboratory**

Equipped with microwave and antenna training sets including gun oscillators, waveguide and wave propagation equipment sets, waveguide matching, transmitting antenna, receiving antenna and complex antenna systems for undergraduate courses.

**EENG Graduation Project Workshop:** This laboratory is solely used by students registered to EENG405 Graduation Design Project Proposal (GDPP) and EENG406 Graduation Design Project (GDP). Students registered for GDPP prepare a 15-20 pages proposal with the help of their supervisors using the guidelines provided on the EENG405-406: GDPP/GDP webpage. Students registered for GDP carry out their hardware design and some measurements in this Workshop. These students have full access to this workshop under the supervision of a technician or a postgraduate assistant.

**Departmental Computer Facilities and Support:** The Electrical and Electronic Engineering students use several software/programs in executing the graduation design projects (GDPs). MATLAB, Proteus, AutoCAD and Multisim are among the most commonly used software. From time to time additional software is also used in teaching, demonstration and GDPs. Recently, the EEE department has purchased highly advanced software and simulation packages like FEKO™ which is an electromagnetic-based simulator. These are being incorporated in undergraduate teaching and they will also be used in designing open-ended laboratory experiments. In addition to all these, some faculty members use software/programs in their instructions which are usually purchased through funded projects that are obtained by the faculty members.

**Internet Access Facility:** All computers in the Department of Electrical and Electronic Engineering are Internet enabled. The traditional Internet services of e-mail, www, ftp, telnet, dns, etc. are available.

**Course Web Pages:** Departmental policy necessitates that each course offered by the department should have a web page. The web pages have a standard user interface while allowing individual instructors to add their own variations through the additional links. This provides students with a customized course web page interface and allows instructors to add creativity to their course pages.

**Postgraduate Computer Research Laboratory:** A special computer laboratory comprising a number of fast PC based systems is made available for postgraduate student research.

**Undergraduate Simulation Laboratory:** 18 PC based workstations are available in the Simulation Laboratory allowing students to use computers for MATLAB based simulation as well as VLSI design using the Xilinx software.

**Undergraduate Computer Laboratories:** Two computer laboratories with 35 PC's are available for access by students during working hours.

**Multimedia Enabled Classroom (MMEC) Facility:** Two multimedia enabled computer laboratories are fitted with multimedia facilities including a multimedia enabled instructor's desk (incorporating a PC, power and light controls), a data projector, an OHP device, a service telephone and 22 PCs for student access; all Internet enabled.

**Wired Lecture Room (WLR) Facilities:** Seven lecture rooms have been re-designed and fitted with multimedia facilities including a multimedia enabled instructor's desk (incorporating a PC, power and light controls), a data projector, Internet access and a service telephone.

**Academic Staff Computing Facility:** Each staff member is given a private office and a desktop PC and/or laptop based computer system. There are two Ethernet connection points in each room allowing versatile connection possibilities. All computers are connected to the departmental UPS system.

**Departmental Servers:** A number of high-end special purpose server machines are available within the Department providing staff with computing services. The servers are mainly used for information sharing, program sharing, and as information and print servers.

**Videoconference and Scanner Facility:** A videoconference facility is available for the use of all staff and postgraduate assistants. A scanner/color printer is made available for the scanning of documents, and for color printing.

## 4- PROGRAM CURRICULUM

### 4.1 Courses

The Bachelor of Science (B.S.) Mechatronics Engineering program offers a wide range of courses in the curriculum which cover all the key areas of mechatronics engineering. The coursework covers the core subjects in electrical circuits, electronics, control systems, material science, mechanics, thermal sciences, design and manufacturing. A wide range of area elective courses offered to students in their *senior* year enables them to specialize in their areas of interest. According to the requirement, courses are supplemented with tutorials and experimental work. Moreover, students are required to spend a total of *eight weeks* in industry to gain practical experience. The breadth and depth of the Mechatronics engineering program curriculum enables our graduates to choose from a variety of career options in research, development, design, production, sales, and management in the industry.

### Subject Areas in Mechatronics Engineering

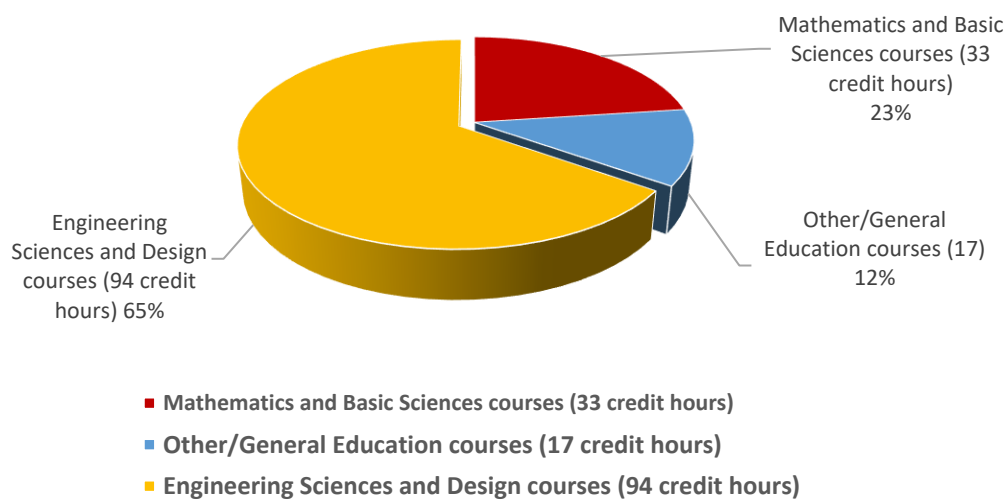
Consistent with the other engineering programs at Eastern Mediterranean University, Mechatronics Engineering BS curriculum begin with studies in basic science and mathematics. These basic science and mathematics courses are applied in engineering sciences and design courses. Ability of communication; oral and written, understanding ethical and professional issues and working in multicultural environment are mostly gained with general education courses. Engineering design activities start during the second year in various courses, progressing in-depth during the third and fourth years as the student's technical skill increases. The design experience culminates with a Capstone Design sequence, which builds upon the fundamentals of engineering, mathematics, science, communication skills, humanities and social sciences, economics, ethics, safety, reliability, industrial applicability, ergonomics and social impact as well as engineering standards. This helps the students to prepare themselves to their future career. Mechatronics Engineering curriculum includes three area elective courses i.e. Area Elective that are specially designed, aiming to give profound knowledge in particular areas.

### Curriculum Course Categories

Courses in Mechatronics Engineering Program curriculum is sub grouped under three subject areas namely:

- Engineering Sciences and Design
- Mathematics and Basic Sciences
- General Education

Mathematics and Basic Sciences courses (33 credit hours) comprise 23% of the total credit hours (141-144), Engineering Sciences and Design courses (94 credit hours) constitute 65% of the total credit hours and the General Education courses (17 credit hours) are 12% of the total credit hours in the Mechatronics Engineering Program. Total credit hours and percentages of each subject area can be seen in Figure.



### Total credit hours and percentages of each subject area of Mechatronics Engineering Program

The following list provides information on each course in the following order: Semester, Reference Code, Course Code, Full Course Title, Credit (weekly lecture hours, laboratory hours and tutorial hours) and Prerequisite Courses.

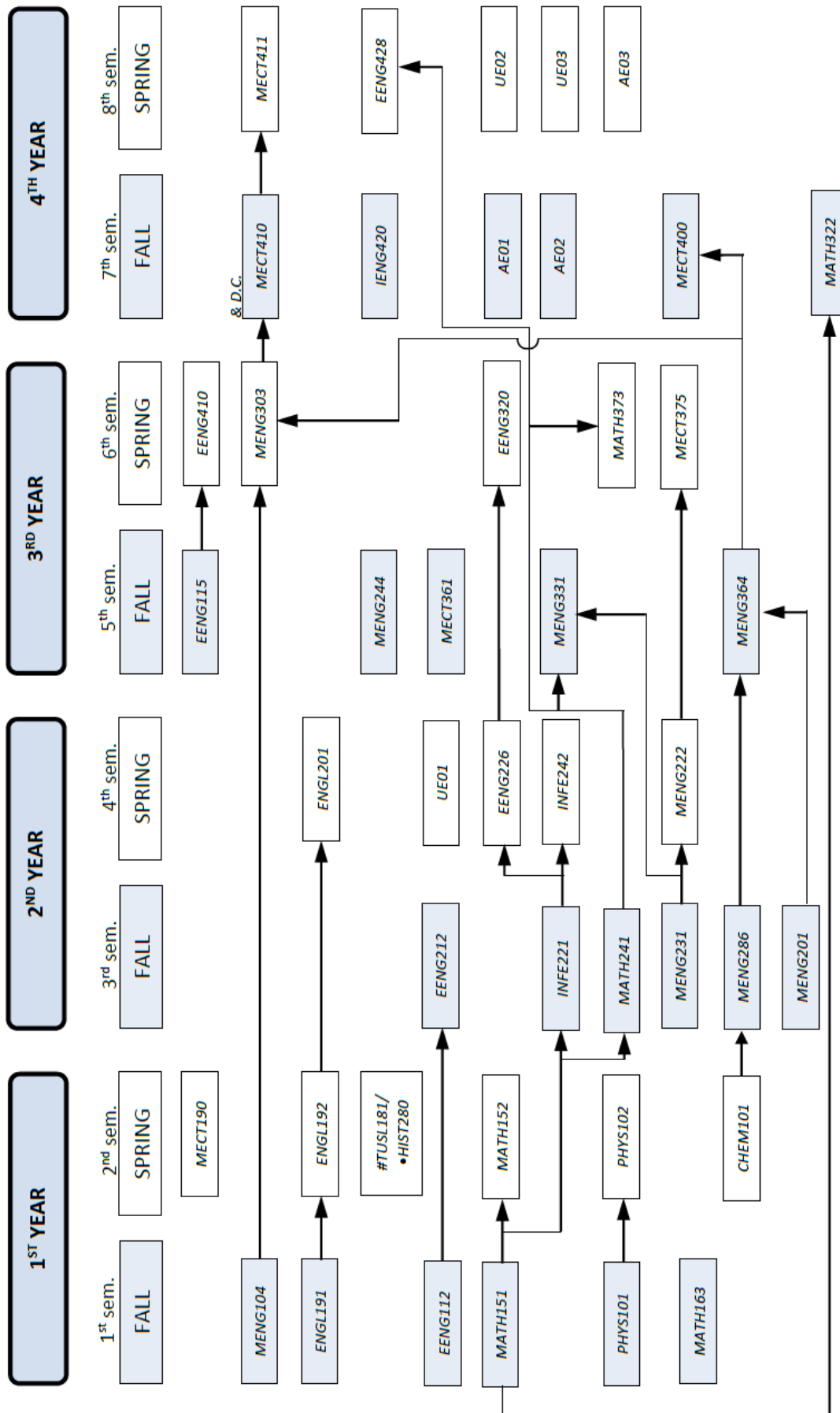
## Mechatronics Engineering Curriculum

Semester	Ref Code	Course Code	Full Course Title	Course Category	Credit				Prerequisites	ECTS
					Lec	Lab	Tut	Total		
1	2A710	MENG104	Engineering Graphics	AC	2	3	0	3		8
1	2A711	EENG112	Introduction to Programming	UC	4	1	0	4		8
1	2A712	ENGL191	Communication in English - I	UC	3	1	0	3		5
1	2A713	MATH151	Calculus – I	FC	4	0	1	4		6
1	2A714	PHYS101	Physics – I	FC	4	1	0	4		6
1	2A715	MATH163	Discrete Mathematics	AC	3	0	1	3		5
<b>1<sup>st</sup> Semester Total Credits</b>								<b>21/21</b>		
2	2A720	MECT190	Introduction to Mechatronics Engineering	FC	1	0	1	1		3
2	2A721	CHEM101	General Chemistry	AC	4	0	1	4		6
2	2A722	ENGL192	Communication in English - II	UC	3	1	0	3	ENGL191	4
2	2A723	MATH152	Calculus – II	FC	4	0	1	4	MATH151	6
2	2A724	PHYS102	Physics – II	FC	4	1	0	4	PHYS101	6
2	2A725	TUSL181/ HIST280	Communication in Turkish*/ History of Turkish Reforms**	UC	2	0	0	2		2
<b>2nd Semester Total Credits</b>								<b>18/39</b>		
3	2A730	MENG201	Mechanical Workshop Practice	AC	1	3	0	2		3
3	2A731	MENG286	Materials Science	AC	3	1	0	3	CHEM101	6
3	2A732	INFE 221	Electrical Circuits	AC	4	1	0	4	MATH151	6
3	2A733	EENG212	Algorithms and Data Structures	AC	4	1	0	4	EENG112	6
3	2A734	MENG231	Engineering Mechanics	AC	3	0	1	3		6
3	2A735	MATH241	Ordinary Differential Equations and Linear Algebra	AC	4	0	1	4	MATH151	6
<b>3<sup>rd</sup> Semester Total Credits</b>								<b>20/59</b>		
4	2A740	INFE242	Electronics	AC	4	1	0	4	INFE221	6
4	2A741	MENG222	Strength of Materials	AC	4	1	0	4	MENG231	6
4	2A742	UE-01	University Elective I (IENG355- Engineering Ethics)	UE				3		3
4	2A743	EENG226	Signals and Systems	AC	4	1	0	4	INFE221	6
4	2A744	ENGL201	Communication Skills	FC	3	0	0	3	ENGL192	4
<b>4<sup>th</sup> Semester Total Credits</b>								<b>18/77</b>		
5	2A750	MECT361	Mechatronics Components and instrumentation	AC	3	1	0	3		6
5	2A751	MENG244	Fundamentals of Thermodynamics	AC	3	1	0	3		5
5	2A752	MENG364	Manufacturing Technology	AC	4	1	0	4	MENG201 & MENG286	6
5	2A753	MENG331	Mechanical Vibrations	AC	4	1	0	4	MENG231 & MATH241	7
5	2A754	EENG115/ EENG315	Introduction to Digital Logic Design / Introduction to Logic Design	AC	4	1	0	4		7
<b>5<sup>th</sup> Semester Total Credits</b>								<b>18/95</b>		
6	2A760	MECT375	Machine Elements	AC	3	0	1	3	MENG222	6
6	2A761	MENG303	Computer Aided Engineering Design	AC	2	3	0	3	MENG104, MENG364	6
6	2A762	EENG320	Control Systems-I	AC	4	1	0	4	EENG226	7
6	2A763	EENG410/ EENG312	Microprocessors-I /Microcontroller Applications	AC	4	1	0	4	EENG115 / EENG315, EENG112	7
6	2A764	MATH373	Numerical Methods for Engineers	AC	3	0	1	3	MATH241	5
<b>6<sup>th</sup> Semester Total Credits</b>								<b>17/112</b>		
7	2A770	MECT400	Industrial Training	FC	0	0	0	0	MENG364	3
7	2A771	MECT410	Introduction To Capstone Design	FC	1	0	1	1	MENG303, D.C.	4
7	2A772	AE-01	Area Elective-I***	AE				3/4		7
7	2A773	AE-02	Area Elective-II ***	AE				3/4		7
7	2A774	IENG420	Fundamentals of Engineering Economy	AC	3	0	0	3		5
7	2A775	MATH322	Probability & Statistical Methods	FC	3	1	0	3	MATH151	5
<b>7<sup>th</sup> Semester Total Credits</b>								<b>15/127</b>		
8	2A780	MECT411	Capstone Team Project	FC	1	4	0	3	MECT410	7
8	2A781	EENG428	Introduction to Robotics	AC	4	0	1	4	MATH241	4
8	2A782	AE-03	Area Elective-III***	AE				3/4		7
8	2A783	UE-02	University Elective II (Non-skill based)	UE				3		3
8	2A784	UE-03	University Elective III (Non-skill based)	UE				3		3
<b>8<sup>th</sup> Semester Total Credits</b>								<b>17/144</b>		

\* For foreign Students      # For Turkish Students      \*\*\* Departmental Consent

Mechatronics Engineering Students must take MECT444 as AE(01), the other two AEs should preferably be from EENG and CMPE coded courses i.e. from Electrical and Electronics Engineering, and Computer Engineering respectively.

Table 4.1 Prerequisite Flowchart for the Mechatronics Engineering Curriculum



#: For foreign students  
 •: For Turkish students  
 D.C. : Departmental consent



7.	<p><b>MENG104 Engineering Graphics</b></p> <p>Principles of engineering graphics with the emphasis on laboratory use of AUTOCAD software. Plane Geometry, geometrical constructions, joining of arcs, Dimensioning principles, principles of orthographic projection, isometric and oblique drawing, principles of sectioning, reading engineering drawing from blueprints.</p> <p><i>Credits: ( 2 / 3 / 0 ) 3</i>                      <i>Prerequisites: None</i>                      <i>ECTS credit: 7</i>  <i>Abbreviated Title: Engineering Graphics</i>                      <i>Category: Area Core Course</i>                      <i>Teaching Language: English</i>  <i>Keywords: Acad, Orthographic, Sectioning, dimensioning</i></p>
8.	<p><b>EENG112 Introduction to Programming</b></p> <p>High-level programming environments. Variables, expressions and assignments. Introducing C programming. Structured programming; sequential, selective and repetitive structures. Function definition and function calls. Prototypes and header files. Recursive functions. Arrays and pointers. Dynamic memory management. Parameter passing conventions. Multi-dimensional arrays. Structures and unions. Conditional compilation, modular programming and multi-file programs. Exception handling. File processing. Formatted I/O. Random file access. Index structures and file organization.</p> <p><i>Credits: (4 / 1 / 0) 4</i>                      <i>Prerequisites: None</i>                      <i>ECTS credit: 8</i>  <i>Abbreviated Title: Int to Programming</i>                      <i>Category: Area Core Course</i>                      <i>Teaching Language: English</i>  <i>Keywords: High level programming, C programming, functions, file processing, index structures</i></p>
9.	<p><b>EENG212 Algorithms and Data Structures</b></p> <p>Storage structures and memory allocations. Primitive data structures. Data abstraction and Abstract Data Types. Array and record structures. Sorting algorithms and quick sort. Linear &amp; binary search. Complexity of algorithms. String processing. Stacks &amp; queues; stack operations, implementation of recursion, polish notation and arithmetic expressions. Queues and implementation methods. Dequeues &amp; priority queues. Linked storage representation and linked-lists. Doubly linked lists and circular lists. Binary trees. Tree traversal algorithms. Tree searching. General trees. Graphs; terminology, operations on graphs and traversing algorithms.</p> <p><i>Credits: (4 / 1 / 0) 4</i>                      <i>Prerequisites: EENG112</i>                      <i>ECTS credit: 6</i>  <i>Abbreviated Title: Algorithms and Data Structures</i>                      <i>Category: Area Core Course</i>                      <i>Teaching Language: English</i>  <i>Keywords: Storage structures, memory allocations, algorithms, queues, arithmetic expressions</i></p>
10.	<p><b>INFE221 Electrical Circuits</b></p> <p>Circuit variables and circuit elements. Some circuit simplification techniques. Techniques of circuit analysis. The operational amplifiers. The natural and step response of RL and RC circuits. Natural and step responses of RLC circuits. Sinusoidal steady-state analysis. Introduction to the Laplace Transform. The Laplace Transform in circuit analysis.</p> <p><i>Credits: (4 / 0 / 1) 4</i>                      <i>Prerequisite: Math151</i>                      <i>ECTS credit: 6</i>  <i>Abbreviated Title: Electrical circuits</i>                      <i>Category: Area Core Course</i>                      <i>Teaching Language: English</i>  <i>Keywords: Circuit variables, elements, circuit analysis, RLC circuits, Laplace transform</i></p>
11.	<p><b>MENG286 Materials Science</b></p> <p>Crystal structure and crystal geometry phase diagrams of alloy systems, heat treatments applied to metallic materials and plain-carbon steels. Mechanical properties of metals stress-strain in metals, tensile test, hardness and hardness testing, fatigue and fracture of metals, impact test, creep of metals and creep test. Strengthening and plastic deformation of metals. Mechanical properties of ceramics, glasses, polymers and composites. Corrosion of metals. Material selection based on mechanical properties.</p> <p><i>Credits: ( 3 / 1 / 0 ) 3</i>                      <i>Prerequisites: CHEM101</i>                      <i>ECTS credit: 6</i>  <i>Abbreviated Title: Materials Science</i>                      <i>Category: Area Core Course</i>                      <i>Teaching Language: English</i>  <i>Keywords: Crystal Structure, Mechanical Testing, Hardening of Steels, Heat Treatment</i></p>
12.	<p><b>EENG 226 Signals and Systems</b></p> <p>Continuous-time and discrete-time signals and systems. Linear time-invariant (LTI) systems: system properties, convolution sum and the convolution integral representation, system properties, LTI systems described by differential and difference equations. Fourier series: Representation of periodic continuous-time and discrete-time signals and filtering. Continuous time Fourier transform and its properties: Time and frequency shifting, conjugation, differentiation and integration, scaling, convolution, and the Parseval's relation. Representation of aperiodic signals and the Discrete-time Fourier transform. Properties of the discrete-time Fourier transform.</p> <p><i>Credits ( 4 / 0 / 1 ) 4</i>                      <i>Prerequisites: INFE221</i>                      <i>ECTS credit: 6</i>  <i>Abbreviated Title: Signals and Systems</i>                      <i>Category: Area Core Course</i>                      <i>Teaching Language: English</i>  <i>Keywords: Continuous time signals, discrete time signals, LTI systems, Fourier transform, Parseval's relation</i></p>
13.	<p><b>INFE242 Electronics</b></p> <p>Semiconductor devices, basic amplifier concepts, diodes, P-N junction diodes, Schottky diodes, Bipolar Junction Transistors (BJTs), Field-Effect Transistors: MOSFETs, JFETs, transistor biasing.</p> <p><i>Credits: (4 / 0 / 1) 4</i>                      <i>Prerequisite: INFE221</i>                      <i>ECTS credit: 6</i>  <i>Abbreviated Title: Electronics</i>                      <i>Category: Area Core Course</i>                      <i>Teaching Language: English</i>  <i>Keywords: Semiconductor devices, P-N junction diodes, Bipolar junction transistors, MOSFETs</i></p>
14.	<p><b>MENG201 Mechanical Workshop Practice</b></p> <p>This is to be conducted in the Mechanical Engineering Department's workshops by all Mechanical Engineering students who have completed a minimum of three semesters in the program. Students will perform various hand and machine tool operations under staff supervision. It includes introduction to engineering materials, and selected practices on laying-out and setting out a job, using measuring devices. At the end of the training students will be required to complete a report regarding their training.</p> <p><i>Credits: ( 1 / 3 / 0 ) 2</i>                      <i>Prerequisites: None</i>                      <i>ECTS credit: 3</i>  <i>Abbreviated Title: Workshop Practice-I</i>                      <i>Category: Area Core Course</i>                      <i>Teaching Language: English</i>  <i>Keywords: Workshop, hand tool operations, machine tool operations, measuring devices</i></p>

15.	<p><b>EENG 115 Introduction to Digital Logic Design</b>  Number systems, arithmetic operations, decimal codes, alphanumeric codes, Boolean algebra, Karnaugh maps, NAND and NOR gates, exclusive-OR gates, integrated circuits, combinational circuits, decoders, encoders, multiplexers, adders, subtractors, multipliers, sequential circuits, latches, flip-flops, sequential circuits analysis, registers, counters, RAM and ROM memories, programmable logic technologies (PLA, PLD, CPLD, FPGA).  <i>Credits: (4/1/0) 4 Prerequisites: None ECTS credit: 7</i>  <i>Abbreviated Title: Int. to Digital Logic Desg. Category: Area Core Course Teaching Language: English</i>  <i>Keywords: Number systems, arithmetic operations, Boolean algebra, decoder, flip-flops, RAM, ROM</i></p> <p><b>EENG315 Introduction to Logic Design</b>  Number systems, arithmetic operations, decimal codes, alphanumeric codes, Boolean algebra, Karnaugh maps, NAND and NOR gates, exclusive-OR gates, integrated circuits, combinational circuits, decoders, encoders, multiplexers, adders, subtractors, multipliers, sequential circuits, latches, flip-flops, analysis and design of sequential circuits.  <i>Credits: (4,1,0) 4 Prerequisites: None ECTS: 7</i>  <i>Abbreviated Title: Int. to Logic Design Category: Area Core Course Teaching Language: English</i>  <i>Keywords: Boolean Algebra, Karnaugh Maps, combinational circuits, sequential circuits.</i></p>
16.	<p><b>MENG222 Strength of Materials</b>  Definition of stress, strain. Hook's law. Constitutive relations for uniaxial stresses. Shearing stress and strain. Torsion of circular members. Thin walled pressure vessels. Relations between bending moment, shearing force and distributed loads. Bending of beams with symmetrical sections. Bending of composite beams.  <i>Credits: (4/1/0) 4 Prerequisites: MENG231 ECTS credit: 6</i>  <i>Abbreviated Title: Strength of Materials Category: Area Core Course Teaching Language: English</i>  <i>Keywords: Axial stress, shear stress, torsion, bending, beams, buckling</i></p>
17.	<p><b>MENG231 Engineering Mechanics</b>  Review of vector algebra. Principle of mechanics. Static equilibrium of particles and rigid bodies. Distributed force systems. Elements of structures, beam, trusses, cables. Friction. Review of particle dynamics, force, energy and momentum methods. Planar kinematics and kinetics of rigid bodies. Energy methods. Particle and rigid body vibrations.  <i>Credits: (3/0/1) 3 Prerequisites: MATH151 and PHYS101 ECTS credit: 6</i>  <i>Abbreviated Title: Engineering Mechanics Category: Area Core Course for IENG Teaching Language: English</i>  <i>Keywords: Mechanics, statics, dynamics, Newton laws, Work, Energy, Momentum</i></p>
18.	<p><b>MENG244 Fundamentals of Thermodynamics</b>  Basic concepts of thermodynamics; Properties of pure substances; Energy transfer by heat, work and mass; The first law of thermodynamics; The second law of thermodynamics; Entropy; Power cycles; Refrigeration cycles.  <i>Credits: (3/1/0) 3 Prerequisites: None ECTS credit: 5</i>  <i>Abbreviated Title: Fundamentals of Thermodynamics Category: Area Core Course Teaching Language: English</i>  <i>Keywords: Basic Concepts, Properties, Laws Of Thermodynamics, close and open systems, gas power cycles and refrigeration cycle.</i></p>
19.	<p><b>MENG303 Computer Aided Engineering Design</b>  Design Process, Engineering Specifications, Project Planning, Concept Generation, Evaluation &amp; Selection, Material and Manufacturing Process Selection, Design for Manufacturability and Assembly, Design for Cost, Design for Environment, Design for Reliability, Design for Test and Maintenance, Human Factors in Design, CAD Modeling and Analysis.  <i>Credits: (2/3/0) 3 Prerequisites: MENG104 and MENG364 ECTS credit: 6</i>  <i>Abbreviated Title: Computer Aided Engineering Design Category: Area Core Course Teaching Language: English</i>  <i>Keywords: Mechanical Engineering Design, CAE, CAD, CAM</i></p>
20.	<p><b>MENG331 Mechanical Vibrations</b>  Discretized Lumped Parameter Modeling of systems. Free and forced vibrations of single degree-of-freedom systems. Multi degree-of-freedom systems. Determination of natural frequencies and Mode Shapes. Continuous systems. Finite Element Method. Vibration Measurement and Control. Balancing of rotating machinery and reciprocating engines.  <i>Credits: (4/1/0) 4 Prerequisites: MENG231 and MATH241 ECTS credit: 7</i>  <i>Abbreviated Title: Mechanical Vibrations Category: Area Core Course Teaching Language: English</i>  <i>Keywords: Vibration, Mechanisms, Modal Analysis</i></p>
21.	<p><b>MENG364 Manufacturing Technology</b>  Fundamentals and principles of major manufacturing processes: casting, bulk deformation, sheet metalworking, powder metallurgy. Processing of polymers, ceramics, glass, rubber and composites. Metal cutting: cutting conditions, forces, temperatures, tool life, surface finish, coolants. Cutting tool materials. Principles, tools and process capabilities of basic machining operations: turning, milling, drilling, planning, shaping, boring, broaching. Gear manufacturing. Abrasive operations: grinding, finishing operations. Non-traditional processes. Basics of joining and assembling. Fusion and solid-state welding. Essentials of computer numerical control.  <i>Credits: (4/1/0) 4 Prerequisites: MENG201 and MENG286 ECTS credit: 6</i>  <i>Abbreviated Title: Manufacturing Technology Category: Area Core Course Teaching Language: English</i>  <i>Keywords: Machining, Casting, Sheet Metal Forming, Bulk Forming, Plastics</i></p>
22.	<p><b>EENG 320 Control Systems-I</b>  Introduction to control: open-loop and closed loop control. Modeling: transfer function, block diagram, signal flow graph, state equations. Feedback control system characteristics: sensitivity, disturbance rejection, steady-state error. Performance specifications: second-order system, dominant roots,</p>

	<p>steady-state error of feedback systems. Stability: Routh-Hurwitz criterion, relative stability. The root-locus method, Bode diagram, Nyquist stability criterion, gain margin and phase margin, Nichols chart.  <i>Credits: ( 4 / 0 / 1 ) 4</i>      <i>Prerequisites: EENG226</i>      <i>ECTS credit: 7</i>  <i>Abbreviated Title: Control Systems</i>      <i>Category: Area Core Course</i>      <i>Teaching Language: English</i>  <i>Keywords: Control, open-loop, closed loop, modelling, transfer function, block diagram, feedback, signal</i></p>
23.	<p><b>EENG 410 Microprocessors-I</b>  Representation of numbers. Two's complement. Sign-magnitude notations. Fixed-length binary arithmetic. Floating-point arithmetic. Introductory microprocessor architecture. Instructions and micro-operations. Machine cycles. Instruction and data fetching. Addressing modes. Inherent, immediate, direct, relative and indexed addressing. Microprocessor interfacing. Data, address and control buses. Memory interfacing. Basic I/O interfacing.  <i>Credits: (4 / 0 / 1) 4</i>      <i>Prerequisites: EENG115</i>      <i>ECTS credit: 7</i>  <i>Abbreviated Title: Microprocessors</i>      <i>Category: Area Core Course</i>      <i>Teaching Language: English</i>  <i>Keywords: Sign magnitude notations, arithmetic, microprocessor architecture, data, memory interfacing</i></p> <p><b>EENG312 Microcontroller Applications</b>  Introduction to microcontrollers: architecture, types and advantages. Assembly/C for microcontroller programming; memory, data types, and variables; writing and debugging programs. Digital Input/Output: digital I/O ports; inputting and outputting digital signals. Analog Input/Output: analog to digital conversion (ADC) and digital to analog conversion (DAC); configuring analog ports. Timers, counters and their applications. Serial communication; configuring and programming UART and SPI. Interrupts: interrupt handling; configuring Interrupts; interrupt service routines (ISRs). Microcontroller interfacing: peripherals such as LCD, keypad, and sensors; interfacing using communication protocols. Industrial Applications.  <i>Credits: (4,1,0) 4</i>      <i>Prerequisites: EENG112, EENG315</i>      <i>ECTS: 8</i>  <i>Abbreviated Title: Microcontroller Applications</i>      <i>Category: Area Core Course</i>      <i>Teaching Language: English</i>  <i>Keywords: Microcontrollers, Timers and Counters, Communication Protocols.</i></p>
24.	<p><b>IENG420 Fundamentals of Engineering Economy</b>  An introduction to the basics of economic analysis for decisions in engineering design, in manufacturing, in manufacturing equipment, and in industrial projects. Time value of money. Cash flow analysis. Cost of capital. Return on investment. Elements of cost and cost estimation. Break-even analysis. Decision making among alternatives. Effects of depreciation. Taxes. Replacement analysis. Inflation.  <i>Credits: ( 3 / 0 / 0 ) 3</i>      <i>Prerequisites: None</i>      <i>ECTS credit: 5</i>  <i>Abbreviated Title: Fundamentals of Eng. Economy</i>      <i>Category: Area Core Course</i>      <i>Teaching Language: English</i>  <i>Keywords: Economic analysis, engineering design, manufacturing, industrial projects, cash flow analysis, cost of capital</i></p>
25.	<p><b>EENG428 Introduction to Robotics</b>  Basic components of robot systems; coordinate frames, homogeneous transformations, kinematics for manipulator, inverse kinematics; manipulator dynamics, Jacobians: velocities and static forces, trajectory planning, Actuators, Sensors, Vision, Fuzzy logic control of manipulator and robotic programming.  <i>Credits: ( 4 / 0 / 0 ) 4</i>      <i>Prerequisites: MATH241</i>      <i>ECTS credit: 4</i>  <i>Abbreviated Title: Int to Robotics</i>      <i>Category: Area Core Course</i>      <i>Teaching Language: English</i>  <i>Keywords: Robot systems, transformations, manipulator, fuzzi logic, actuators, programming</i></p>

**\*\* Departmental Consent**

<p><b>Engineering Sciences and Design (Area Elective Courses)</b>  <b>In order to register for the Area Elective Courses with no Pre-requisites (i.e., Pre-requisites: None), minimum number of attended semesters is required to be 6. Mechatronics Engineering Students must take MECT444 as AE(01), the other two AEs should preferably be from EENG and CMPE coded courses i.e. from Electrical and Electronics Engineering, and Computer Engineering respectively..</b></p>	
1.	<p><b>MECT444 Industrial Automation</b>  Programmable controllers used in industrial automation: microcontrollers, embedded systems, programmable logic controller (PLC) and programmable automation controller (PAC). Advantages of using PLC in automation. PLC architecture. PLC ladder programming, integration of industrial sensors and actuators with PLCs, PLC timers and counters, real world application examples and automation applications. Introduction to SCADA  <i>Credits: ( 4 / 1 / 0 ) 4</i>      <i>Prerequisites: EENG320 or MENG332</i>      <i>ECTS credit: 7</i>  <i>Abbreviated Title: Industrial Automation</i>      <i>Category: Area Elective</i>      <i>Teaching Language: English</i>  <i>Keywords: Programmable Logic Controllers, Automation</i></p>
2.	<p><b>MENG422 Automotive Engines</b>  Internal combustion engines; two stroke and four stroke engines; spark ignition engines; compression ignition engines; basic engine parts; valve trains and timing diagrams; lubrication systems; cooling systems; fuel injection systems and ignition systems; advanced engineering- materials in automotive field.  <i>Credits: ( 4 / 1 / 0 ) 4</i>      <i>Prerequisites: MENG246 or MENG244</i>      <i>ECTS credit: 7</i>  <i>Abbreviated Title : Automotive Engines</i>      <i>Category: Area Elective Course</i>      <i>Teaching Language: English</i>  <i>Keywords: Engine, piston, valve, spark plug</i></p>



3.	<p><b>MENG424 Reliability Engineering</b></p> <p>Introduction to Reliability. Failure data. Reliability, Availability, Maintenance, and Safety (RAMS). Reliability Prediction &amp; Modelling, Reliability Block Diagrams, Redundancy, Fault tree analysis. Failure Mode and Effect Analysis (FMEA). Risk Management. Design for Reliability. Standards, codes and regulations on reliability.</p> <p><i>Credits: ( 4 / 1 / 0 ) 4 Prerequisites: MATH322 and MENG364 and MENG375 (or MECT375) ECTS credit: 7</i></p> <p><i>Abbreviated Title : Reliability Engineering Category: Area Elective Course Teaching Language: English</i></p> <p><i>Keywords: Probability, Reliability, Risk</i></p>
4.	<p><b>MECT462 Micro-electromechanical systems</b></p> <p>The aim of this course is to learn MEMS and micro-integrated system. This course helps students to gain basic knowledge on overview MEMS, different fabrication techniques, MEMS applications, and the future of its emerging field. It will enable them to design, analysis, simulation, fabrication and testing the MEMS based components. As an important part of the course, the microelectronics process modules which are used in the design and fabrication of MEMS will be studied and the properties of commonly used materials will be discussed. In addition, the applications of MEMS in the manufacturing of a variety of sensors and transducers for broad ranges applications will be described.</p> <p><i>Credits: ( 4 / 0 / 1 ) 4 Prerequisites: MECT361 o EENG245 and MENG332 or EENG320 and MATH241 or MATH207 ECTS: 7</i></p> <p><i>Abbreviated Title: MEMS Category: Area Elective Course Teaching Language: English</i></p> <p><i>Keywords: Microelectromechanical systems, miniaturization, microfabrication, lithography, deposition, sensor, transducer, actuator, optic, silicon, nanoelectronics, nano-mechanism, nanogenerator, piezoelectric, thin-film, analysis, modeling, simulation.</i></p>
5.	<p><b>MENG471 Mechanisms</b></p> <p>Introduction to Mechanisms, Kinematics Fundamentals, Draw kinematic diagrams, Calculate the mobility of Mechanisms, Position analysis of mechanisms, Velocity Analysis of Mechanisms, Acceleration Analysis of Mechanisms, Kinematic analysis of mechanisms, Kinematic analysis of gear mechanisms, Kinematic analysis of Belt and Chain Drives, Kinematic analysis of Screw Mechanisms, Use the techniques learned to design a mechanism.</p> <p><i>Credits: ( 4 / 1 / 0 ) 4 Prerequisites: MENG233 (or MENG231) and MENG375 (or MECT375) ECTS credit: 7</i></p> <p><i>Abbreviated Title : Mechanisms Category: Area Elective Course Teaching Language: English</i></p> <p><i>Keywords: Linkages, Mechanisms, Kinematics</i></p>
6.	<p><b>MENG473 Vibration Analysis and Design</b></p> <p>Undamped and damped free vibration; forced vibrations with harmonic excitation; transient vibrations; systems with two degrees of freedom; vibration of continuous systems and Modal Analysis. Vibration Measurement &amp; Control, Finite Element Method, Nonlinear and Random Vibrations.</p> <p><i>Credits: ( 4 / 1 / 0 ) 4 Prerequisites: MENG331 and MATH373 ECTS credit: 7</i></p> <p><i>Abbreviated Title : Vibration Analysis and Design Category: Area Elective Course Teaching Language: English</i></p> <p><i>Keywords: Vibration, excitation, Modal Analysis</i></p>
7.	<p><b>MENG474 Spaceflight Dynamics</b></p> <p>The major topics covered include: Co-ordinate Systems, Orbital Mechanics, Two Body problem, Satellite Ground Tracks, Launch Trajectory, Orbital Maneuvers, Space Environment, Orbital Perturbations, Spacecraft Attitude Dynamics and Control, Satellite Constellations, Re-entry Dynamics and Interplanetary spaceflight.</p> <p><i>Credits: ( 4 / 0 / 1 ) Prerequisites: (MENG233 or MENG231) and ((MENG332 or EENG320) and MATH373 ECTS: 7</i></p> <p><i>Abbreviated Title: Spaceflight Dynamics Category: Area Elective Course Teaching Language: English</i></p> <p><i>Keywords: Spaceflight Dynamics, Orbital Mechanics, Orbital Maneuvers, Launch Trajectory</i></p>
8.	<p><b>MENG475 Biomechanics</b></p> <p>Introduction to Mechanics and Biomechanics. Statics, Kinematics and Dynamics. Coordinate Systems. Musculoskeletal Tissues and Biomaterials. Stress-Strain Analysis and Joint Contact Problems. Software for Biomechanical Analysis.</p> <p><i>Credits: ( 4 / 0 / 1 ) 4 Prerequisites: (MENG233 or MENG231) and (MENG286 or CIVL283) ECTS credit: 7</i></p> <p><i>Abbreviated Title: Biomechanics Category: Area Elective Course Teaching Language: English</i></p> <p><i>Keywords: Musculoskeletal, Biomechanics, Material, Tissue</i></p>
9.	<p><b>MENG464 Computer Integrated Manufacturing</b></p> <p>Manufacturing Systems, Automation Technologies for Manufacturing Systems, Computer Numerical Control (CNC), Industrial Robotics; Integrated Manufacturing Systems, Material Handling, Fundamentals of Production Lines, Cellular Manufacturing, Flexible Manufacturing Systems, Computer Integrated Manufacturing (CIM); Production Planning and Control, Just-In-Time Delivery Systems, Lean Production, Quality Control and Inspection Technologies; Smart Factory and Industry 4.0</p> <p><i>Credits: ( 4 / 1 / 0 ) 4 Prerequisites: IENG263 or MENG364 and MATH322 ECTS credit: 7</i></p> <p><i>Abbreviated Title : Computer Integrated Manufacturing Category: Area Elective Course Teaching Language: English</i></p> <p><i>Keywords: CIM, Manufacturing, CAD/CAM</i></p>

10.	<p><b>CMPE 312 Software Engineering</b></p> <p>The software life cycle and the phases in software development: Project scheduling, feasibility study, analysis, specification, design, implementation, testing, quality assurance, documentation, maintenance. Management issues: Planning, organization, control. Also included are formal specification techniques, structured programming, modular system design and other current issues.</p> <p><i>Credits: ( 4/ 1 / 0 ) 4</i>                              <i>Prerequisites: EENG212</i>                              <i>ECTS credit: 7</i></p> <p><i>Abbreviated Title: Software Engineering</i>                              <i>Category: Area Elective</i>                              <i>Teaching Language: English</i></p> <p><i>Keywords: XXX</i></p>
11.	<p><b>CMPE428 Data Science</b></p> <p>Introduction to data science process and its lifecycle. The role of data scientist, problem definition, data preparation, model planning and building, delivery of the results. Introduction to R and Rstudio. Graphical user interfaces, data import from different sources such as csv, xls, JSON, SPSS, SAS, ARFF and online sources (URLs). Attributes and their types. Vectors, matrices, lists and classes in R. Data frames and operations on data frames. Data Exploration and wrangling using R. Cleaning data. Data Visualization using ggplot2. Supervised versus unsupervised learning from data. Clustering for unsupervised learning. Supervised learning for regression and evaluation of the models in terms of degree of fit. Logistic regression models. Classification models. Decision trees and naïve Bayes classifier. Implementation of the classifiers and their evaluation. Performance metrics. Extraction and selection of attributes. Dimensionality reduction using principal component analysis and exploratory factor analysis. Selecting most discriminative attributes using forward and backward selection methods. Visualization of high-dimensional data using principal components.</p> <p><i>Credits: ( 4/ 1 / 0 ) 4</i>                              <i>Prerequisites: MATH322</i>                              <i>ECTS credit: 7</i></p> <p><i>Abbreviated Title: Data Science</i>                              <i>Category: Area Elective</i>                              <i>Teaching Language: English</i></p>
12.	<p><b>CMPE 461 Artificial Intelligence</b></p> <p>Definitions of AI from different point of views , intelligent agents and agent architectures, rational intelligent agents, how agents should act and environments of intelligent agents. Problem solving agents, formulating problems, and searching for solutions. Uninformed search strategies: BFS, DFS, DLFS, IDFS. Informed search methods: Greedy algorithms, uniform cost search, heuristic functions, A*-search, memory-bounded search, iterative improvement algorithms. Constraint satisfaction problems (CSPs): Definitions, Backtracking search for CSPs, The structure of SCPs. Adversarial search: Games, Optimal decisions in games. Alpha-Beta pruning. Agents that reason logically: knowledge-based agents, representation of knowledge, reasoning, logic, and inference in propositional logic. First-order logic: syntax and semantics, extensions and notational variations, elements of first order logic, and inference in first-order logic.</p> <p><i>Credits: ( 4/ 1 / 0 ) 4</i>                              <i>Prerequisites: EENG212</i>                              <i>ECTS credit: 7</i></p> <p><i>Abbreviated Title: Artificial Intelligence</i>                              <i>Category: Area Elective</i>                              <i>Teaching Language: English</i></p>
13.	<p><b>CMPE 476 System Simulation</b></p> <p>General concepts of systems. Discrete and continuous systems. State variables. Models, modeling and simulation of systems. Principles and techniques for system modeling and simulation. Comparison of analytical modeling and simulation modeling techniques. General structure of a simulation system. Probability aspects of simulation. Techniques and methods of generation of random numbers and random variates with the desired probability distribution. Simulation languages and packages. Transaction-oriented and event-oriented simulation. Queuing systems in simulation. Validation and verification of simulation models. Output (statistical) analysis and representation of simulation results.</p> <p><i>Credits: ( 4/ 1 / 0 ) 4</i>                              <i>Prerequisites: MATH322</i>                              <i>ECTS credit: 7</i></p> <p><i>Abbreviated Title: System Simulation</i>                              <i>Category: Area Elective</i>                              <i>Teaching Language: English</i></p>
14.	<p><b>EENG350 Electromechanical Energy Conversion</b></p> <p>Magnetic circuits and materials; Single-phase transformers, auto-transformers, measurement transformers, three-phase transformers; Electromechanical energy conversion principles; Synchronous motors and generators; Dc motors and generators; Induction motors; Speed control principles.</p> <p><i>Credits: ( 4/ 1 / 0 ) 4</i>                              <i>Prerequisites: ???</i>                              <i>ECTS credit: 7</i></p> <p><i>Abbreviated Title: Electromechanical Energy Conversion</i>                              <i>Category: Area Elective</i>                              <i>Teaching Language: English</i></p>
15.	<p><b>EENG471 Information Management</b></p> <p>Database systems; components of database systems, DBMS functions, database architecture and data independence, hypertext, hypermedia and multimedia. Data modelling. Entity-relationship model. Object-oriented model. Relational data model. Entity and referential integrity. Relational algebra and relational calculus. Relational database design. Functional dependency and normal forms. Transaction processing. Distributed databases. Physical database design; storage and file structures, indexed files, hashed files, B-trees, files with dense index, files with variable length records.</p> <p><i>Credits: ( 4/ 1 / 0 ) 4</i>                              <i>Prerequisites: EENG212</i>                              <i>ECTS credit: 7</i></p> <p><i>Abbreviated Title: Information Management</i>                              <i>Category: Area Elective</i>                              <i>Teaching Language: English</i></p>

16.	<b>EENG473</b>	<b>Computer Simulation</b>	Introduction to simulation as an important modelling and decision tool in order to design and analyse complicated real-life systems for which there is no analytical solution. Simulation methodology and model building. Simulation languages. Continuous, Monte-Carlo and Discrete Event simulation. Basic issues in the design, verification and validation of simulation models. Statistical analysis of simulation output data. Use of simulation for estimation and optimization of performance. Application to queuing systems and computer networks. <i>Credits: ( 4/1/0 ) 4</i> <i>Abbreviated Title: Computer Simulation</i>	<i>Prerequisites: MATH322, EENG212</i> <i>Category: Area Elective</i>	<i>ECTS credit: 7</i> <i>Teaching Language: English</i>
17.	<b>EENG474</b>	<b>Software Engineering</b>	The software life cycle. Requirements analysis and specification of requirements. Software design and selection. Initial design, modularity, structure charts and partitioning. Detailed design and notations. Data modelling and design. The Relational database model. Software testing, documentation and maintenance. Object modelling and principles of OO analysis.( Prerequisite: EENG212) <i>Credits: ( 4/1/0 ) 4</i> <i>Abbreviated Title: Software Engineering</i>	<i>Prerequisites: EENG212</i> <i>Category: Area Elective</i>	<i>ECTS credit: 7</i> <i>Teaching Language: English</i>
18.	<b>EENG476</b>	<b>Computing Systems</b>	Machine level representation of data. Assembly level machine organization. Memory system organization. I/O and communication. CPU implementation. Operating system principles. Concurrency. Scheduling and dispatch; preemptive and non-preemptive scheduling. Process and threads. Physical memory and memory management hardware. Virtual memory; paging and segmentation. Memory mapped files. Device management. Characteristics of serial or parallel devices. Buffering strategies. Servers and interrupts. Security and protection; security methods and devices. Protection, access and authentication. Encryption. <i>Credits: ( 4/1/0 ) 4</i> <i>Abbreviated Title: Computing Systems</i>	<i>Prerequisites: EENG115, EENG212</i> <i>Category: Area Elective</i>	<i>ECTS credit: 7</i> <i>Teaching Language: English</i>
19.	<b>IENG409</b>	<b>Occupational Safety and Health</b>	This course is designed to introduce the engineering student with the basic principles of occupational safety and health management in industry. Development of safety and health function, concepts of hazard avoidance, impact of regulations, toxic substances, environmental control, noise, explosive materials, fire protection, personal protection and first aid will be introduced. <i>Credits: ( 3/1/0 ) 3</i> <i>Abbreviated Title: Occupational Safety and Health</i>	<i>Prerequisites: -</i> <i>Category: Area Elective</i>	<i>ECTS credit: 7</i> <i>Teaching Language: English</i>
20.	<b>IENG450</b>	<b>Industrial Management</b>	This is a service course offered to non-IE engineering students. The aim is to prepare the students to assume positions in industry as engineering managers. The topics covered include the historical development of industrial management, introductory operations management, functions of technology management, managing technological change, managing engineering projects, and managing the engineering career. <i>Credits: ( 3/1/0 ) 3</i> <i>Abbreviated Title: Industrial Management</i>	<i>Prerequisites: -</i> <i>Category: Area Elective</i>	<i>ECTS credit: 7</i> <i>Teaching Language: English</i>
21.	<b>IENG461</b>	<b>Systems Modeling and Simulation</b>	The aim of this course is to give our students a decision tool in order to design and analyze complicated real life systems for which there is no well formulated solution. Emphasis is primarily on applications in the areas of production management through the analysis of respective computer simulation models. Use and misuse of simulation as a decision tool. Simulation methodology and model building. Modeling with a simulation language. Random variate generation. Basic issues in the design, verification and validation of computer simulation models. Statistical analysis of simulation output data. Use of simulation for estimation and comparison of alternatives. <i>Credits: ( 3/1/0 ) 3</i> <i>Abbreviated Title: System Modeling</i>	<i>Prerequisites: MATH322</i> <i>Category: Area Elective</i>	<i>ECTS credit: 7</i> <i>Teaching Language: English</i>
22.	<b>IENG 484</b>	<b>Quality Engineering</b>	The purpose of the course is to make an introduction and lay the foundations of modern methods of statistical quality control and improvements that are used in the manufacturing and service industries. The course also introduces basics of experimental design in determining quality products and reliability models. The students will first be introduced to some of the philosophies of quality control experts and their impact on quality. After a quick review of normal probability distribution, a few graphical methods used to monitor quality improvement will be given. Control charts for variables and attributes will be given with examples. Acceptance sampling plans for variables and attributes are to follow. Principles of design of experiments along with Taguchi method will be presented. Finally reliability of systems like series, parallel, series – parallel and parallel – series systems and their design will be discussed. <i>Credits: ( 3/1/0 ) 3</i> <i>Abbreviated Title: Quality Engineering</i>	<i>Prerequisites: MATH322</i> <i>Category: Area Elective</i>	<i>ECTS credit: 7</i> <i>Teaching Language: English</i>

## Mathematics and Basic Sciences Courses

1.	<p><b>MATH151 Calculus – I</b> Limits and continuity. Derivatives. Rules of differentiation. Higher order derivatives. Chain rule. related rates. Rolle's and the mean value theorem. Critical Points. Asymptotes. Curve sketching. Integrals. Fundamental Theorem. Techniques of integration. Definite integrals. Application to geometry and science. Indeterminate forms. L'Hospital's Rule. Improper integrals. Infinite series. Geometric series. Power series. Taylor series and binomial series. <i>Credits: ( 4 / 0 / 1 ) 4</i> <i>Prerequisites: None</i> <i>ECTS: 6</i> <i>Abbreviated Title: Calculus -I</i> <i>Category: Faculty Core Course</i> <i>Teaching Language: English</i> <i>Keywords: Limits, Continuity, Derivatives, Differentiation, Chain Rule, Rolle's Theorem, Mean Value, Integrals, Taylor Series</i> <i>Department offering the course: 41 – Department of Applied Mathematics &amp; Computer Science</i></p>
2.	<p><b>MATH152 Calculus-II</b> Vectors in R<sup>3</sup>. Lines and Planes. Functions of several variables. Limit and continuity. Partial differentiation. Chain rule. Tangent plane. Critical Points. Global and local extrema. Lagrange multipliers. Directional derivative. Gradient, Divergence and Curl. Multiple integrals with applications. Triple integrals with applications. Triple integral in cylindrical and spherical coordinates. Line, surface and volume integrals. Independence of path. Green's Theorem. Conservative vector fields. Divergence Theorem. Stokes' Theorem. <i>Credits: (4 / 0 / 1) 4</i> <i>Prerequisites: MATH151</i> <i>ECTS: 6</i> <i>Abbreviated Title: Calculus-II</i> <i>Category: Faculty Core Course</i> <i>Teaching Language: English</i> <i>Keywords: Vectors, Planes, Lagrange Multipliers, Gradient, Volume, Greene's Theorem, Divergence, Stoke's Theorem</i> <i>Department offering the course: 41 – Department of Applied Mathematics &amp; Computer Science</i></p>
3.	<p><b>MATH163 Discrete Mathematics</b> Set theory, functions and relations; introduction to set theory, functions and relations, inductive proofs and recursive definitions. Combinatorics; basic counting rules, permutations, combinations, allocation problems, selection problems, the pigeonhole principle, the principle of inclusion and exclusion. Generating functions; ordinary generating functions and their applications. Recurrence relations; homogeneous recurrence relations, inhomogeneous recurrence relations, recurrence relations and generating functions, analysis of algorithms. Propositional calculus and boolean algebra; basic boolean functions, digital logic gates, minterm and maxterm expansions, the basic theorems of boolean algebra, simplifying boolean function with karnaugh maps. Graphs and trees; adjacency matrices, incidence matrices, eulerian graphs, hamiltonian graphs, colored graphs, planar graphs, spanning trees, minimal spanning trees, Prim's algorithm, shortest path problems, Dijkstra's algorithms. <i>Credits: (3 / 0 / 1) 3</i> <i>Prerequisites: None</i> <i>ECTS: 5</i> <i>Abbreviated Title: Discrete Mathematics</i> <i>Category: Area Core Course</i> <i>Teaching Language: English</i> <i>Keywords: Set Theory, recurrence relations, Graphs, Trees, Matrices;</i> <i>Department offering the course: Mathematics</i></p>
4.	<p><b>MATH241 Ordinary Differential Equations and Linear Algebra</b> Systems of linear equations, elementary row operations, echelon form, Gaussian elimination method; Matrices; Determinants, adjoint and inverse matrices, Cramer's rule; Vector spaces, linear independence, bases and dimension, eigenvalue problem. First-order differential equations, separable differential equations, change of variables, exact differential equations; Second-order differential equations, the method of undetermined coefficients, the variation of parameters method; General results of first-order linear systems, homogeneous constant coefficient vector differential equations, variations of parameters for linear systems; Laplace transform method. <i>Credits: ( 4 / 0 / 1 ) 4</i> <i>Prerequisites: MATH151</i> <i>ECTS: 6</i> <i>Abbreviated Title: Int to Mechatronics Engineer</i> <i>Category: Area Core Course</i> <i>Teaching Language: English</i> <i>Keywords: Introduction to Mechatronics engineering, standards, ethics, communication.</i></p>
5.	<p><b>MATH322 Probability and Statistical Methods</b> Introduction to probability and statistics. Operations on sets. Counting problems. Conditional probability and total probability formula, Bayes' theorem. Introduction to random variables, density and distribution functions. Expectation, variance and covariance. Basic distributions. Joint density and distribution function. Descriptive statistics. Estimation of parameters, maximum likelihood estimator. Hypothesis testing. <i>Credits: ( 3 / 0 / 1 ) 3</i> <i>Prerequisites: MATH151</i> <i>ECTS: 5</i> <i>Abbreviated Title: Prob &amp; Statistical Methods</i> <i>Category: Faculty Core Course</i> <i>Teaching Language: English</i> <i>Keywords: Probability, Statistics, Bayes' Theorem, Hypothesis Testing</i> <i>Department offering the course: 41 – Department of Applied Mathematics &amp; Computer Science</i></p>
6.	<p><b>PHYS101 Physics I</b> Families of physical quantities having different dimensions, units and rules of mathematics. Vector mathematics and calculus, their applications to motion. Newton's laws. Integrals of the second law, work-energy, impulse-momentum, conservation of energy and momentum, applications. Rotations. Static equilibrium. <i>Credits: (4 / 1 / 0) 4</i> <i>Prerequisites: None</i> <i>ECTS credit: 6</i> <i>Abbreviated Title: Physics I</i> <i>Category: Faculty Core Course</i> <i>Teaching Language: English</i> <i>Keywords: Physical Quantities, Vectors, Motion, Second Law, Work, Energy, Impulse, Momentum, Rotations</i> <i>Department offering the course: 42 – Department of Physics</i></p>
7.	<p><b>PHYS102 Physics-II</b> Kinetic theory of ideal gases. Equipartition of energy. Heat, heat transfer and heat conduction. Laws of thermodynamics, applications to engine cycles. Coulombs law and electrostatic fields. Gauss's law. Electric potential. Magnetic field. Amperes law. Faradays law. <i>Credits: ( 4 / 1 / 0 ) 4</i> <i>Prerequisites: PHYS101</i> <i>ECTS credit: 6</i> <i>Abbreviated Title: Physics-II</i> <i>Category: Faculty Core Course</i> <i>Teaching Language: English</i> <i>Keywords: Charge, Electromagnetic Induction</i> <i>Department offering the course: 42 – Department of Physics</i></p>

8.	<b>CHEM101</b> <b>General Chemistry</b> Atoms, molecules and ions; Mass relations in chemistry, stoichiometry; Gasses, the ideal gas law, partial pressures, mole fractions, kinetic theory of gases; Electronic structure and the periodic table; Thermo chemistry, calorimetry, enthalpy, the first law of thermodynamics; Liquids and Solids; Solutions; Acids and Bases; Organic Chemistry. <i>Credits: ( 4 / 0 / 1 ) 4</i> <i>Abbreviated Title: General Chemistry</i> <i>Keywords: chemical terms, nomenclature, chemical bonds, polarity, states of matter, chemical formulas, measurements, natural science, basic science</i> <i>Department offering the course: 43 – Department of Chemistry</i>	<i>Prerequisites: None</i> <i>Category: Area Core Course</i>	<i>ECTS credit: 6</i> <i>Teaching Language: English</i>
9.	<b>MATH373</b> <b>Numerical Analysis for Engineers</b> Numerical error. Solution of nonlinear equations, and linear systems of equations. Interpolation and extrapolation. Curve fitting. Numerical differentiation and integration. Numerical solution of ordinary differential equations. <i>Credits: ( 3 / 0 / 1 ) 3</i> <i>Abbreviated Title: Numerical Analysis for Eng</i> <i>Keywords: Numerical Analysis, Interpolation, Extrapolation,</i> <i>Department offering the course: 41 – Department of Applied Mathematics &amp; Computer Science</i>	<i>Prerequisites: MATH207 or MATH241 or MATH203</i> <i>Category: Faculty Core Course</i>	<i>ECTS credit: 5</i> <i>Teaching Language: English</i>

### General Education Courses

1.	<b>ENGL191</b> <b>Communication in English I</b> ENGL 191 is a first semester freshman academic English course The purpose of this course is to consolidate and develop students' knowledge and awareness of academic discourse, language structures and lexis. The prime focus will be on the further development of writing, reading, speaking and listening skills in academic settings, and on improving study skills in general. <i>Credits: ( 3 / 1 / 0 ) 3</i> <i>Abbreviated Title: Communication in English I</i> <i>Keywords: Language, English, Reading, Writing, Speaking; Department offering the course: Department of General Education</i>	<i>Prerequisites: None</i> <i>Category: University Core Course</i>	<i>ECTS: 5</i> <i>Teaching Language: English</i>
2.	<b>ENGL192</b> <b>Communication in English II</b> ENGL 192 is a second semester freshman academic English course The purpose of this course is to further consolidate and develop students' knowledge and awareness of academic discourse, language structures and lexis. The prime focus will be on the further development of writing, reading, speaking and listening skills in academic settings, and on improving study skills in general. <i>Credits: ( 3 / 1 / 0 ) 3</i> <i>Abbreviated Title: Communication in English II</i> <i>Keywords: Language, English, Reading, Writing, Speaking; Department offering the course: Department of General Education</i>	<i>Prerequisites: ENGL191</i> <i>Category: University Core Course</i>	<i>ECTS: 4</i> <i>Teaching Language: English</i>
3.	<b>TUSL181</b> <b>Turkish as a Second Language</b> TUSL181 is a Basic Turkish course introducing the Turkish language. It incorporates all four language skills and provides an introduction to basic grammar structures. Students will be encouraged to develop their writing skills through a variety of tasks. The aim of this course is for students to be able to understand and communicate in everyday situations, both in the classroom and in a Turkish-speaking environment. <i>Credits: : ( 2 / 0 / 0 ) 2</i> <i>Abbreviated Title: Turkish as a second Language</i> <i>Keywords: Turkish, grammar, writing, speaking; Department offering the course: Department of General Education</i>	<i>Prerequisites: None</i> <i>Category: University Core Course</i>	<i>ECTS: 2</i> <i>Teaching Language: Turkish</i>
4.	<b>HIST280</b> <b>History of Turkish Reforms</b> 19. century state of the Ottoman Empire (Constitutional Period), Tripoli and the Balkan Wars, World War II and the results, the Guilds, the War of Independence, Cease Fire Ant., Lausanne, Ant. <i>Credits: ( 2 / 0 / 0 ) 2</i> <i>Abbreviated Title: General Education VI</i> <i>Keywords: History, Ottoman Empire, Wars; Department offering the course: HC – ATATÜRK Research Center</i>	<i>Prerequisites: None</i> <i>Category: University Core Course</i>	<i>ECTS: 2</i> <i>Teaching Language: Turkish</i>
5.	<b>ENGL201</b> <b>Communication Skills</b> ENGL 201 is a second year Mainstream Communication Skills course for students at the Faculty of Engineering. The course aims to introduce a range of skills, including effective written and oral communication, research skills and study skills. Throughout the course the students will be involved in project work intended to help them in their immediate and future academic and professional life. This will include library research, technical report writing and an oral presentation. By investigating a topic of their own choice, students will develop their understanding of independent research skills. During the report writing process, students will improve their writing and develop the ability to produce organized, cohesive work. The oral presentation aims to enhance spoken fluency and accuracy and provide training in the components of a good presentation. <i>Credits: ( 3 / 0 / 0 ) 3</i> <i>Abbreviated Title: Communication Skills</i> <i>Keywords: Communication Skills, Report Writing, Oral Presentation, Independent Research,; Department offering the course: Department of General Education</i>	<i>Prerequisites: ENGL192</i> <i>Category: Faculty Core Course</i>	<i>ECTS: 4</i> <i>Teaching Language: English</i>

### University Elective Courses (Non-Technical Courses Offered by other Departments)

	<b>A list of non-technical electives is announced at the beginning of each semester by the Department. This list contains courses offered by the Faculty of Business and Economics, the School of Tourism and Hospitality Management, Departments of Communication and Media Studies etc. University elective courses taken by Mechanical and Mechatronics Engineering students must satisfy the ABET criteria. Out of the total three one of the University elective courses should be selected as Engineering Ethics.</b>		
1.	<b>IENG355</b> <b>Ethics in Engineering</b> This course is designed to introduce moral rights and responsibilities of engineers in relation to society, employers, colleagues and clients. Analysis of ethical and value conflict in modern engineering practice. Importance of intellectual property rights and conflicting interests. Ethical aspects in engineering design, manufacturing, and operations. Cost-benefit-risk analysis and safety and occupational hazard considerations. <i>Credits: ( 3 / 0 / 0 ) 3</i> <i>Abbreviated Title: Ethics in Engineering</i> <i>Keywords: Moral rights, value conflict, engineering practice, intellectual property rights, safety, hazard</i>	<i>Prerequisites: None</i> <i>Category: Area Core Course</i>	<i>ECTS: 3</i> <i>Teaching Language: English</i>

## 5- UNIVERSITY and ACADEMIC REGULATIONS

Academic Regulations have been laid down by the Northern Cyprus Educational Trust to govern and guide the functioning of Eastern Mediterranean University. The rules and regulations are available at <http://mevzuat.emu.edu.tr/>. Students should refer to the given internet address for the Regulations for Students. **In case of any conflict, the regulations in Turkish will supersede.** Some regulations are presented below.

### 5.1. English Language Proficiency Requirement:

Once students are admitted, they are guided by their assigned academic advisors depending on their status at EMU. There are three possible status after admission to EMU.

D1. Student successfully pass the FLEPS English Language proficiency exam or submit a certificate indicating adequate level of English language achieved from an internationally known proficiency exam can directly start his/her first semester courses with the help of Department Coordinator for Academic Advising.

D2. When student did not have adequate level of English Language after taking the proficiency exam at entry level then s/he should have spent minimum of one semester at Foreign Languages and English Preparatory School (FLEPS), where their advisor will be assigned from FLEPS.

D3. Depending on the English Language level achieved as a result of final exam at FLEPS student will either move to his/her already accepted department or may partially achieve the proficiency and s/he had to stay at FLEPS but allowed to take courses from his/her department. Table below shows the details of English Language level, corresponding number of courses that can be taken from department and academic advisor.

**Table: Foreign Languages and English Preparatory School (FLEPS) Score Requirement**

Student English Language Mark	Result of Assessment at FLEPS	English Course to be taken at department	Comments	Academic Advisor
S1: 90-100 S2: 80-89 S3: 70-79 S4: 60-69	Successful	ENGL191 (4 hrs/week)	Take first semester courses in department	Department Coordinator for Academic Advising
T1: 50-59	Partially successful	ENGL181 (6 hrs/week)	Take first semester courses in department	Department Coordinator for Academic Advising
T2: 40-49	Partially successful	ENGL183 (9 hrs/week)	Take three courses with minimum English requirement from first two semesters in department	Department Coordinator for Academic Advising
T3: 30-39	Partially successful	ENGL185 (12 hrs/week)	Take two courses with minimum English requirement from first two semesters in department	Department Coordinator for Academic Advising
0-29	Unsuccessful	N/A	Continue another semester at FLEPS	FLEPS Advisor

Once students are in their department, they are guided through their academic programs by their assigned academic advisors. Academic staff advise the group of students assigned at the beginning of each student's second actual term. The academic staff assigned is the advisor of the student until all the requirements are fulfilled and the student graduates from the program. The advisor is responsible for the course registration of student with consideration of performance and status, program curriculum, course contents, and pre-requisites. The students are informed to download the digital undergraduate program handbook of the program from the department web page.

## 5.2. Conditions for Taking Courses from Another Institution

- a) Department and/or Faculty/School board determines whether the student can take courses outside the university or not and/or whether the courses to be taken outside the University are the equivalents of courses in the student's own program in terms of content and credits.
- b) Duration of studies at another institution is included in the period of study specified in the Eastern Mediterranean University Education, Examinations and Success By-law, regardless of the difference of the institution and the number of courses to be taken.
- c) Total credits of courses taken from another institution of higher education cannot exceed 25% of the course credits the student has to take during the school/undergraduate specified program period.
- d) The student keeps his/her student rights in EMU, however, s/he cannot benefit from the student rights regarding diploma or student status in the higher education institution s/he takes course from.
- e) A student who wishes to take courses from another higher education institution should apply to the relevant department head in writing and attach a formal and certified document summarizing the titles, credits and content of the courses to be taken as well as the weekly course timetable no later than the relevant semester or summer school registration renewal period.
- f) Equivalency of the grades obtained at another higher education institution is determined by the faculty/school board decisions based on the Senate decisions and relevant by-laws.
- g) Students who take courses at another higher education institution continue to pay full tuition fee or the course(s) fees in EMU. However, if the student needs to pay for the courses to be taken at another institution of higher education, fees to be paid in EMU are determined by the University Executive Board.
- h) In order to be eligible to take courses from another higher education institution, a student should attend the registered program in EMU for at least one academic year and should have a minimum CGPA of 2.00.
- i) Those who do not meet the requirements of article (h) can take courses from another institution of higher education with the approval of the University Executive Board and positive views of the department and faculty boards.

## 5.3. Student Advisor

For each registered student, a student advisor who is a member of the academic staff is appointed by the Department Chair. The student advisor has the obligation of guiding the student in course registration, or in other academic, administrative and social matters. Students must obtain their advisors' approval for the following transactions: registration, selection of core and elective courses, adding courses to their schedules, dropping courses from their schedules, and/or withdrawing from a course. Students are encouraged to meet regularly with their advisors to review their academic performance and progress, discuss problems or get scholarly advice.

## 5.4 Course Registration

A student registration is done according to his/her academic status as follows:

- a) Registration of students with "Honor and High Honor Status": Students who are in "High Honor" or "Honor" status can optionally register for one more course in addition to the normal course load of the semester.
- b) Registration of students with "Successful Status": Students who are in "Successful" status can register for at most the normal course load of the semester.
- c) Registration of students with "on Probation Status": Students who are "on probation" are obliged to repeat failed courses before registering for the new ones. The students are allowed to register for two new courses at most, on the condition that they do not exceed normal course load. A student who receives "on probation" status will remain in this status until his CGPA is raised above the limits indicated in Table 5.4. In the semester following the on probation, the student is not allowed to register for more than two new courses. The student will be asked to repeat some of the courses which he had already taken in previous semesters with priority given to courses with grades F, NG and D-.
- d) Registration of students with "Unsuccessful Status": Students who are in "unsatisfactory" status are not allowed to register for any new course. These students will be asked to repeat courses already taken in the previous semesters, with priority given to the grades F, NG and D-. However, in the case that the courses from which (F), (NG) or (D-) grades were obtained are not offered, or the student's course load being under the specified limit, the student can repeat courses from which a (D), (D+) or (C-) grade was obtained until the normal course load is met.
- e) Registration of students with "Graduating Status": Students who are in "Successful" status are considered to be in "Graduating Status" if and only if the remaining credited courses for their graduation is less than or equal to 7 courses (including courses with F, NG and D- grades). Such students are allowed to register for the whole remaining courses provided that they fulfil the prerequisite rules.

## 5.5 Registration Procedure

Immediately prior to the commencement of classes for each semester, certain days are designated for formal registration, as indicated on the academic calendar. At this time, all newly admitted students are advised and given class schedules. Students must register for all mandatory courses offered in the regular semesters (Fall and Spring) of the first (freshmen) year. All registration activities must be performed by the students concerned. Registration by proxy or mail is not accepted.

- a) After making the payment the students can select courses online through their student portal.
- b) The student must visit his /her Advisor's Office in order to confirm the registration. The advisor helps the students in selecting appropriate courses, and finalizes their weekly class schedule/time table for that semester based on the vacancy availability in groups.
- c) After the advisor finishes the registration process, the students can see their courses registered and weekly class schedule.
- d) Two days are dedicated for registration at the start of every semester.

## 5.6 Academic Term

Academic term” of a student refers to total number of registered courses in relation to the number of listed courses in the department’s published program of study (curriculum). Non-credit courses and courses that are not included in the normal course load upon Senate’s decision are not taken into account in determining a student’s academic term.

## 5.7 Course Load

For every semester, the number of specified credit courses of a registered program makes up the semester course load. Non-credit courses are not taken into account in the computation of the course load. However, upon the recommendation of the student advisor and the approval of the Department Chair:

- a) a maximum of two courses can be reduced from the normal course load of a semester. In this case, the student must register for the untaken courses at the nearest next semester the courses are offered.
- b) a student’s semester course load can be increased by one course at most. In order to do this,
  1. The student’s Cumulative Grade Point Average (CGPA) should not be below 3.00, or
  2. The student has to be designated a ‘High Honor’ or an ‘Honor’ at the end of the previous academic term.
- c) Course load of graduating students with no academic warnings can be increased by two courses. A student at the graduation semester is the student who is given the right to graduate upon the successful completion of all projected courses at the end of the last semester of an academic program in addition to at most two remaining courses in all other programs (except LAW). Non- credit courses and courses that are not included in the normal course load upon Senate’s decision are not taken into account in determining course load.

## 5.8 Prerequisite Courses

- a) In order to register for a course that has a pre-requisite, a student must have obtained at least a D- grade from the related pre-requisite course.
- b) Graduating students are allowed to register for courses with pre-requisites even if they score a F grade from the pre-requisite course.
- c) At all semesters (including the graduation semester), a prerequisite course and the course following it cannot be taken within the same semester if the prerequisite course has never been taken before or if the student obtained an (NG) or a (W) grade from it.
- d) Faculty or School Councils have the authority to take decisions concerning the requirements for prerequisite courses.

## 5.9 Repeating a Course

The following provisions are applied in repeating a course:

- a) A student who obtains a (W), (D-), (F), (NG) or (U) grade from a course must register for the course at the first available opportunity.
- b) If the course to be repeated is Area Elective of Engineering courses, University Elective of General Education courses or has been excluded from the program, the student is required to take another appropriate course specified by the Department.
- c) If a student wishes to improve his/her previously obtained grades, s/he can repeat a course in which s/he previously passed in the last 2 years.

***The grade obtained from the repeated course takes the place of the previous grade. However, the first grade still appears on the transcript.***

## 5.10 Course Selection

Priorities in course selection are as follows:

- a) Courses with (W), (F), (NG), (U) or (D-) grades.
- b) Courses of previous semesters that have not been taken yet.
- c) Courses of the current semester that have not been registered yet.
- d) Other appropriate courses.

## 5.11 Course Times / Hours

In order to enable the students to attend classes regularly, course hour clashes are avoided. The advisor may approve if there is a maximum of a two-hour clash. However, in special and mandatory conditions, upon Department Chair’s consent, clashes exceeding two hours may be approved, if the student accepts the clashes.

## 5.12 Late Registration

Late registration is possible during the period specified in the academic calendar. Late registration penalty are determined by the Rectors’ office in accordance with the principles set concerning this issue.

## 5.13 Adding or Dropping Courses

From the first day of the commencement of the classes until the deadline specified on the academic calendar, students are allowed to change their course schedule by adding a new course or dropping a registered course. These changes must be made upon the recommendation of the student’s advisor.



## 5.14 Course Withdrawal

- In a semester, a student is allowed to withdraw from two registered courses at most, provided that the student does not get into part-time status. Course withdrawal should be done between the set dates specified on the academic calendar through using online application in student portal. Online approval of the Advisor and Department Chair is necessary. A student who withdraws from a course will receive the grade 'W'. This grade is not taken into consideration during the calculation of the CGPA and the GPA, but appears on the transcript.
- A student cannot withdraw from a course that was withdrawn before, a course that is repeated (a different course with the same reference code) or a course that has no credit.
- Full time students can not withdraw from courses which may change the status "Part-Time".

## 5.15 Course Evaluation

Student course performance is evaluated by using continuous assessment mechanisms that include midterm and final examination(s), quizzes, homework, laboratory study, and course projects etc. These mechanisms are organized in order to check the students' ability in meeting the Course Learning Outcomes (CLO) and Student Outcomes (SO). During the evaluation process, the students are given a mark which is typically out of 100 and then at the end of the semester the cumulative average mark of the student is converted to a letter grade by the course instructor.

The letter grades are organized on a 4.00 point grading scale. The letter grades, their grade point equivalence and respective descriptions are given in Table 5.1.

**Table 5.1 The Letter Grades**

Grade	GPA	MARKS	Description	LEVELS
A	4	85-100	Superior Pass in a credit-course	EXCELLENT
A-	3.7	80-84	Superior Pass in a credit-course	EXCELLENT
B+	3.3	75-79	Very Good Pass in a credit-course	VERY GOOD
B	3	70-74	Very Good Pass in a credit-course	VERY GOOD
B-	2.7	66-69	Very Good Pass in a credit-course	VERY GOOD
C+	2.3	63-65	Pass in a credit-course	SATISFACTORY
C	2	60-62	Pass in a credit-course	SATISFACTORY
C-	1.7	57-59	Conditional Pass in a credit-course	UNSATISFACTORY
D+	1.3	54-56	Conditional Pass in a credit-course	UNSATISFACTORY
D	1	50-53	Conditional Pass in a credit-course	UNSATISFACTORY
D-	0.7	45-49	Failure in a credit-course	FAIL
F	0	0-44	Failure in a credit-course	
NG	0		Failure in a credit-course due to disinterest of the student	
S	-		Satisfactory (Pass in a non-credit-course)	
U	-		Unsatisfactory (Failure in a non-credit-course)	
I	-		Incomplete (work with excuse, grade to be given later)	
W	-		Withdrawal from a course	

Grades A, A-, B+, B, B-, C+, and C are issued to indicate varying levels of unconditional "Pass" status for the successful scores. Grades C-, D+, and D indicate the "Conditional Pass" status, where the students with these grades are regarded as successful given that the Cumulative Grade Point Average (CGPA) is above or equal to 2.00. Grades D- and F indicate "Failure" and the students with these grades have to repeat the course in the proceeding semester. Students who do not comply with the required level attendance and/or not fulfilling the requirements for the evaluation of the course are given the "NG" (Nill-Grade) grade by the Instructor of the Course based on the criteria determined by the Faculty/School Academic Council. The grades "S" or "U" are given to students who are registered to non-credit courses. "S" indicates satisfactory and "U" indicates unsatisfactory completion of the non-credit course. "I" grade is given to students who have not sat the end of semester exam and/or has not completed some of the projects/ laboratory work which contributes to the end-of-semester grade because of a valid reason that can officially be proved if required. Such students are obliged to sit for the missed exam and/or complete the project/laboratory work at least one week before the registration period of the following semester. Failure to comply with this will result in an automatic F grade being given for the concerned course. However, students whose reason for absenteeism continues at the end of the above indicated deadline, must apply to the Department with official certification indicating the continuation of the reason for absenteeism. The Mechanical Engineering Department Chair then takes the issue to the Faculty Academic Council where a decision will be taken on the period for the completion of the "I" grade. The period of completion requirement mentioned above is not valid for graduating students. Faculty Academic Councils determine these students' situations. An "I" grade is not taken into account in the computation of the Grade Point Average (GPA) or Cumulative Grade Point Average (CGPA). A student who thinks is eligible for "I" grade, must apply to the Course Instructor together with official documentation supporting the case, at most 3 working days following the final examination date of the course. The grade "W" is given to students who were allowed to withdraw from a registered course between the 3<sup>rd</sup> and 11<sup>th</sup> weeks of the semester. The "W" grade is shown on the transcript of the student.

## 5.16 Mid-term Examinations

In every academic semester, a minimum of 1 and a maximum of 3 mid-term exams are given to students in each course. No mid-term examinations can be administered during the final week of the semester or the week before the end-of-classes.

## 5.17 Final Examinations

Final examinations are administered on the dates specified in the Academic Calendar.

Letter grades are announced by the Registrar's Office at a date determined by the Rector's Office.

## 5.18 Other Criteria to be Considered for Assessment

- a. Quizzes which are prepared and evaluated by the course instructor can be administered without prior notice.
- b. In applied courses, evaluation can be based on projects, workshops, laboratory reports, presentations and /or examinations. Examinations can have written or oral format. Either the course instructor or another academic member of the staff assigned by the Course Coordinator is entitled to make the workshop/lab evaluations.
- c. Homework prepared during the term can be included in the overall evaluations. Homework is assessed by the course instructor or a faculty member assigned by the course instructor.

## 5.19 Make-up Examinations

- a. A student who fails to sit for an examination for a valid reason is given a make-up exam. Within **three working days** after the examination, students who wish to take a make-up must submit a written statement to the course instructor or the course coordinator explaining the reason(s) for his/her request. Student must secure a "Make-Up Exam Form" from the department Office and must secure the approval from the instructor for taking the Make-Up Exam.
- b. Make-up exams for the mid-term and final exams may take place after the final exam.

## 5.20 Resit Examinations

- a. RESIT EXAMINATION is an additional examination right granted to students studying at undergraduate and associate programs.
  - It is administered at the end of each term (excluding the summer term) following the announcement of the letter grades.
  - Taking a resit examination requires online registration (no fees are applied for online registration).
  - No Resit Examinations are available for application/practice courses.
  - No Resit Examinations are applied for the courses of the English/Turkish Preparatory School.
  - No Resit Examinations are applied for graduate courses (even if registered by a student studying at an undergraduate/associate program).
  - There is no Resit Examination for students studying at graduate programs (including registered deficiency courses, language support courses and undergraduate courses)
- b. Resit Examination covers all topics of that course (all topics included in midterm and final examinations.)
  - Online registration is required.
  - Online registration will be carried out via the Student's Portal, after the final exams.
  - Weight of the Resit Examination will be equal to the total weight of mid-term and final examinations of a specific course.
  - The letter grade of the course will be assigned according to the RESIT score (if there are any other scores obtained from other forms of assessment than midterm and final examinations, they will also be considered in the letter grade calculation)
  - There is NO MAKE-UP examination for the RESIT EXAMINATION
- c. The following are the conditions for registering for the resit examination of a course:
  - Students, may register for the RESIT EXAMINATION of the courses with "D-" or "F" grades obtained within that term,
  - Students with a "WARNING", "UNSATISFACTORY" or "ON PROBATION" status may register for the RESIT EXAMINATIONS of all (possible) courses, excluding those with "NG" grades, at the end of the relevant term.In the event of not sitting for a registered resit examination, students will be assigned "0".

## 5.21 Graduation Make-up

Any student who is at the graduation semester but fails to fulfill all requirements is eligible to take the graduation make-up examination under the following circumstances:

- a. Students who fail to meet the graduation requirements due to F and/or D- grades are allowed to sit the exam for up to 2 courses with previously obtained grades of F and/or D- provided that these courses were taken within the last two semesters.
- b. Students who fail to meet the graduation criteria due to low CGPA (less than 2.00) are allowed to take the graduation make-up examination for up to 2 courses with D, D+, C- grades.
- c. A student who fails a graduation make-up of a specific course must register for that course again. A graduation make-up cannot be given for courses with NG grades. Grades obtained from the graduation make-ups are evaluated as term letter grades.

## 5.22 Appeals

- A student has the right to ask the relevant academic staff member to see all documents involved in the determination of the semester grade no later than a week following the publication of the letter grades.
- Any appeal against the marks of a mid-term examination or any other assessment components must be made to the course instructor within one week following the announcement of the marks. The relevant course instructor is required to evaluate the appeal within one week. If the student is not satisfied with the instructor's evaluation, s/he has the right to appeal in writing to the relevant department chair within 3 days following the instructor's evaluation date. The department chair will form a committee of instructors to finalize the student's appeal within one week. The decision of the committee is final.
- Any appeal concerning a letter grade must be made to the relevant course instructor no later than the end of the registration period of the following semester. Appeals against semester grades are finalized based on the principles laid out in 'b'.
- In cases where the letter grades have been assigned inaccurately and/or an administrative/calculation mistake has been made, taking the relevant course instructor's application for a grade change into consideration, the relevant grade change takes place with the decision of the Department Council, Faculty Council and the University Executive Board, on the condition that the mistake has been supported by evidence, the relevant student has not graduated and/or the period between the announcement of the end of semester letter grades and the application for a grade change has not exceeded one calendar year.

## 5.23 Semester Evaluation by GPA

A student's academic achievement for each term is expressed numerically by an index referred to as the "Grade Point Average" (GPA). When calculating the GPA, mid-term exam(s), the final exam, lab/workshop reports and/or exams (if applicable), tests, projects, and/or homework are taken into consideration. Credit received from a course is found by multiplying the credit hours by the coefficient corresponding to the grade received. The GPA is then found by dividing the sum of the credits received from all courses registered during the semester by the total credit hours of the same courses. All grades from A to NG are included in the calculation of the Grade Point Average (GPA). An example of GPA calculation is illustrated in Table 5.2 below.

**Table 5.2 GPA Calculation**

Course Code	Letter Grade Received	Grade Point Equivalent		Credit Hours		Total Credits
MLDE118	B-	2.70	x	3	=	8.10
MATH106	C	2.00	x	3	=	6.00
ENGL191	B	3.00	x	3	=	9.00
PHYS101	A	4.00	x	4	=	16.00
MATH151	D-	0.70	x	4	=	2.80
<b>TOTAL=17</b>						<b>41.90</b>

$$\text{GPA} = (41.90/17) = 2.46$$

## 5.24 Overall Evaluation by CGPA

A Student's overall academic achievement is expressed by a real number called the "Cumulative Grade Point Average" (CGPA). The CGPA is calculated by dividing the total credits received from all courses the student has completed since joining the program by the sum of the credit hours of these courses. In cases when a course is repeated, the last grade is included in the CGPA computations. In this case, the student whose GPA is given as an example above will have the following calculation for his/her GPA and CGPA for the following semester (Table 5.3).

**Table 5.3 CGPA Calculation**

Course Code	Letter Grade Received	Grade Point Equivalent		Credit Hours		Total Credits
MENG233	B+	3.30	x	4	=	13.20
ENGL192	C	2.00	x	3	=	6.00
MATH151	C	2.00	x	4	=	8.00
PHYS102	A	4.00	x	4	=	16.00
HIST280	B	3.00	x	2	=	6.00
<b>TOTAL=17</b>						<b>49.20</b>

$$\text{GPA} = (49.20/17) = 2.89$$

$$\text{CGPA} = ((41.90+49.20-2.80) / (17+17)-4)$$

$$\text{CGPA} = 88.30 / 30 = 2.94$$

In Table 5.3, as MATH 151 course is repeated, the last grade obtained is calculated instead of the previous grade given in Table 5.2. Therefore, the 4 credits and the 2.80 credit-hour value belonging to the previous term are not included to calculation of the CGPA.

## 5.25 Scholastic Standing

- Satisfactory Students: A student is considered successful if the required CGPA for a particular semester is achieved as given in Table 5.4.
- Honor and High Honor Students: Students who (with a full course load, and with maximum number of course) obtain a GPA between 3.00 and 3.49 are designated an "Honor Student". Students who obtain a GPA between 3.50 and 4.00 are designated a "High Honor Student" status.
- Success for Undergraduate Programs (registered after 2007-08): Academic standing of the students is monitored and regulated according to the Table 5.4 which relates End of Academic Term (EAT) with the obtained CGPA. Students enrolled in an undergraduate program whose CGPA's are specified in Table 5.4 are considered to be "successful", "on probation" or "unsuccessful".

**Table 5.4 The Acting Standing**

End of Academic Term (EAT)	Successful Student	Students On Probation	Unsuccessful Student
1 <sup>st</sup> EAT	-	-	-
2 <sup>nd</sup> EAT	CGPA $\geq$ 1.50	$1.00 \leq$ CGPA < 1.50	CGPA < 1.00
3 <sup>rd</sup> EAT	CGPA $\geq$ 1.50	$1.00 \leq$ CGPA < 1.50	CGPA < 1.00
4 <sup>th</sup> EAT	CGPA $\geq$ 1.50	$1.00 \leq$ CGPA < 1.50	***
5 <sup>th</sup> EAT	CGPA $\geq$ 1.80	$1.50 \leq$ CGPA < 1.80	CGPA < 1.50
6 <sup>th</sup> EAT	CGPA $\geq$ 1.80	$1.50 \leq$ CGPA < 1.80	CGPA < 1.50
7 <sup>th</sup> EAT	CGPA $\geq$ 1.80	$1.50 \leq$ CGPA < 1.80	CGPA < 1.50
8 <sup>th</sup> and more EAT	CGPA $\geq$ 2.00	$1.80 \leq$ CGPA < 2.00	CGPA < 1.80

\*\*\* Students who completed a minimum of 4 academic semesters (if the fourth semester is Spring Semester, then at the end of the Summer School) and who have a CGPA below 1.00 are dismissed from the program.

The starting semester of students transferring from one program to another internally or externally is accepted as an Academic Term. However, transfer students are considered as successful at the new program at the end of the first semester of the transferred program. Based on the Student Exchange Program framework, every semester spent out of the University is considered as an Academic Term. Unless there is a valid reason specified in By-Laws and Regulations, students are required to finish four-year programs at most in 8 years. Periods of leave of absence are not taken into consideration in the specified periods above. Students who fail to graduate within the specified period are dismissed from the University. However, graduating students who meet specific requirements may be given an additional time period. Requirements, additional time period and rules concerning graduating students are regulated by the 'Course Registration By-Law'.

## 5.26 Leave of Absence

- Students may request online for a leave of absence on the understanding that they will return to the program of study and subject to permission being granted by the University.
- Application for leave of absence should be made in writing to the Registrar's office. Such applications made from abroad must be certified by a Commissioner of Oaths.
- Students can apply for leave of absence with a valid reason within the first 5 weeks of the semester starting from the first day of the commencement of classes. Decision on these applications is given, by the Rector, upon the proposal of the Dean who has considered the advice of the Department Chair.
- Students can apply for leave of absence only with the report of an official Health Council certifying the nature of illness or other official documentation certifying the reason put forward in the application. Such applications must be submitted within the first 5 weeks of the semester starting from the first day of the commencement of classes. In overseas applications the date of official certification is taken into consideration. Decision on all such applications is given, by the Rector upon the proposal of the Dean based on **the recommendation of the Department Academic Council**.

## 5.27 Returning from Leave of Absence

At the end of the 'leave of absence' period, students can simply continue their education by following the routine registration procedure. Students, who were granted 'leave of absence' on health grounds, must provide a certificate approved by the Health Council indicating their fitness for continuing their studies. Students granted two semesters of 'leave of absence' and who wish to return to their studies at the end of the first semester, should apply in writing to the Registrar's Office. Each such application is considered according to the procedure followed in the evaluation of applications for leave of absence.

## 5.28 Cancelling Registration from the University and Refunding

A student can cancel registration from the University by applying in writing to the Registrars' Office and completing the necessary process. Following the completion of the process, the student will be entitled to a refund of the tuition fee based on the principles determined by the Board.

### **5.29 Attendance Requirements**

Students are required to attend the registered courses, laboratory, studio, tutorial, practice, other academic studies and examinations required by the related course instructor. Student attendance is monitored and assessed by the course instructor. A student who fails to meet the requirements of a course or who is absent more than the limit specified by the Faculty or School is considered to be unsuccessful in that course.

### **5.30 Student Status**

Students can be categorized as *full-time*, *part-time*, *special* and *visiting*.

- a. Students have the full-time status provided that they take 3/5 or more of the total credit hours per semester at an undergraduate or school program.
- b. Students who take less than 3/5 of the total credit hours per semester upon the recommendation of the student advisor and consent of the department head/school director are considered as part-time at an undergraduate or school program.
- c. A student who is not registered to any program, but who is permitted to attend the lectures of some courses, is given the status of Special Student. No diploma or degree is conferred upon such students, but a certificate showing the courses completed and student performance is prepared by the Registrar's Office. Applications for Special Student status are evaluated and decided on by the Department Chair or the School Director. Registration of accepted special students is carried out by the Registrar's Office according to the rules stated in these regulations. Such students are required to possess at least a Secondary School Diploma.
- d. Students who receive undergraduate or postgraduate education at an institution within the country or abroad and, upon their institution's consent, who take courses at the Eastern Mediterranean University with the aim of credit transfer are considered as visiting students. No diploma or degree is conferred upon such students, but a transcript summarizing the courses taken and credits earned is issued.

### **5.31 Student Portal Service**

A student portal service is provided by the university Registration Office to help the students follow their letter grades for the respective courses, grade point average (GPA) of the respective semester and cumulative GPA (CGPA) for all of the completed semesters. The portal provides a solid foundation for students and their advisors in following the students' progress through their degree study. The student performance and progress are continuously monitored and managed with the student advising system.

### **5.32 Summer School**

Summer school is organized mainly to help students with low scholastic achievement, and may be registered to for credit with the approval of the Department. These sessions are normally held before the Fall semester and form periods of intensive study which last for eight weeks. Any number of courses may be offered, although this is based on student demand, as reflected by pre-registration procedures. A student may register for a maximum of two courses offered during the summer school through the registration procedure outlined above for a normal term. The scholastic achievement is graded in the same way and included in the CGPA calculations at the end of the summer session.

## 6- CODE OF ETHICS for STUDENTS

---

Students are expected to adhere to and practice the following Code of Ethics

### **Honest and Respectful Representation**

Every student of the department is expected to represent him or herself honestly and respectfully in all situations, whether orally or in written statements. Honest and respectful representation includes, but is not limited to:

- Providing only truthful material information on all University applications, financial aid forms, waivers, and any other official document.
- Students are also expected to behave respectfully to all administrators, faculty, staff, students, and visitors within the Department or campus environment and to behave respectfully when representing the Department or EMU at on- or off-campus events.

### **Acting with Academic Honesty**

Students are expected to maintain the highest standards of academic integrity.

- Work that is not of the student's own creation will receive no credit. If a student is uncertain of what these standards are, he or she may consult his or her instructor for appropriate counsel, but a student's ignorance is no legitimate defense for academic dishonesty.
- Academic dishonesty includes lying, cheating, stealing, and using unauthorized materials on any assignment, quiz or exam.
- The act of lying is to intentionally provide false information or a false statement with the purpose of misleading or with irresponsible regard of the truth. Lying, in both academic and non-academic activities, is impermissible.
- Cheating is acting dishonestly in order to gain an unfair advantage. Cheating includes giving or receiving unauthorized aid on any assignment, quiz, or exam. Instructors must be consulted regarding which materials are acceptable for students to use on any assignment, quiz, or exam.
- Cheating also includes using the same material of work previously used for another course unless the student has permission from the instructor to do so.
- Cheating furthermore includes plagiarism, which is when a student uses the ideas of another and declares it as his or her own.
- Students are required to properly cite the original source of the ideas and information used in his or her work.
- Stealing is the act of taking without permission and without intention to return. The prohibition of stealing includes property of any nature as well as academic work.

### **Respect for University Rules and Regulations**

Students of the EMU are expected to adhere to the rules and regulations set by the University.

### **Respect and Care for University Property**

- Damaging of University property is unacceptable and a violation of EMU Rules and Regulations. Students shall be responsible for the costs of the damages resulting from their behavior.
- Students are also expected to report instances of any damage to University property immediately; as well as consciously account for or dispose properly of their belongings.

### **Avoiding the Use of Illegal Substances**

- The use of illegal drugs and alcohol is not permitted on Campus as well as the abuse or misuse of prescription drugs.

### **Refraining from any Assault and Harassment**

- Students shall refrain from using language or acting in a manner that is disrespectful or inappropriate towards other students and members of the EMU community.
- Sexual assault and harassment is inexcusable and shall result in disciplinary action in accordance with the University policy.

### **Respectful Classroom Conduct**

- Students must behave respectfully toward their peers and professors.
- In the classroom setting, students may not interrupt their classmates or professor, make fun of them or their expressed views, or disrupt the learning environment.
- It is important to maintain the best learning environment for all students and professors.
- Not complying with the restrictions of the instructor will result in appropriate discipline, as decided by the instructor or department.

### **Respect for the Open Exchange of Ideas**

- Students shall be guaranteed that their right of Freedom of Speech will be observed by all faculty and EMU members, including other students. Students are encouraged to engage others in thoughtful and meaningful dialogue while refraining from acting or using language with malicious intent.
-

## 7 - SAFETY GUIDELINES & INSTRUCTIONS

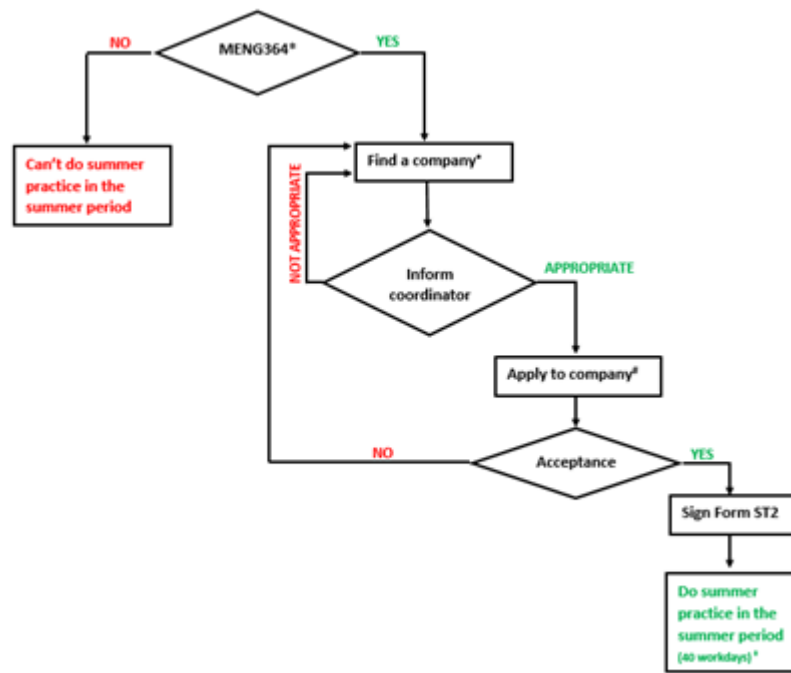
Workshop safety is everyone's responsibility, the following rules have been put in place to ensure the safety of all students, and are intended to reduce the risk of the more common hazards. Normally, a machine shop or experimental laboratory is a safe place to work. However, the presence of rotating machinery, heavy equipment and materials, hot materials and pipes, and hazardous materials requires that you take extra precautions to protect yourself. Please read the safety rules carefully and please observe these rules. Hazards can be avoided by thinking of the consequences before you act. If you are not sure of the safety aspects of your assignments, always consult an instructor. Laboratory specific safety rules may be required for specific processes, equipment, and materials, which should be addressed by laboratory specific SOPs. Students are expected to adhere to and practice the following guidelines:

- Supervisor or instructor **MUST** be notified whenever a student intends to work in an unsupervised area. Students are not allowed in the Lab without a supervisor.
- Students working must notify their supervisor or instructor whenever they intend to work in the Lab. No one is permitted to work in the shop or lab areas alone. This is to provide protection and assistance in case personal injury should occur.
- Know locations of laboratory safety showers, eye wash stations, and fire extinguishers.
- Know emergency exit routes. Follow the warning signs when unusual hazards, hazardous materials, hazardous equipment, or other special conditions are present.
- Use equipment only for its designated purpose.
- Do not operate tools or machinery that you haven't been trained for. Avoid using items unless you've been trained in proper handling. This is for your own safety as well as the safety of those around you.
- When working on any equipment the appropriate safety equipment for hand, eye and hearing protection must be used.
- Wear the correct protective equipment for the tools you are using. If in doubt. Please ask!
- Safety glasses with side shields or goggles to cover prescription glasses shall be worn in the Machine Shop at all times.
- Keeping arms and legs covered, avoiding dangling jewelry or ties, and wearing closed-toe shoes can go a long way in minimizing common workplace injuries and accidents.
- Loosely fitting clothing may become entangled in rotating machinery; do not wear it in the shop or labs.
- Clothing made of synthetic fibers should not be worn while working with flammable liquids or when a fire hazard is present as these materials tend to melt and stick to exposed skin.
- In the welding shop, long-sleeve shirts or equivalent are required to protect from u.v. radiation. Any damage to your clothes (e.g. oil marks) is your own responsibility.
- In the welding shop, long-sleeve shirts or equivalent are required to protect from u.v. radiation. Any damage to your clothes (e.g. oil marks) is your own responsibility.
- People with long hair shall wear it tied up or with protective covering to ensure that their hair cannot become entangled with machinery or burnt with welding equipment.
- Avoid wearing jewelry in the lab as this can pose multiple safety hazards. Rings and loose jewelry shall be removed while working with machinery.
- No contact lenses should be worn around hazardous chemicals – even when wearing safety glasses.
- Closed toe shoes will be worn at all times in the laboratory.
- Perforated shoes or sandals are not appropriate.
- Safety shoes with steel toes are preferred.
- When welding, special eye protection and gloves are to be worn. This will protect eyes from high intensity light and u.v. and hands from u.v. burns. Also, remember the work piece is extremely hot and will remain so for a considerable time after actual welding is done.
- When working with machine tools, keep your fingers well away from the tool.
- Make sure your work piece is fixed securely before work commences.
- Do not handle chips coming from the work piece as they are hot and have sharp cutting edges.
- When using any wrench provided to tighten a tool bit or work piece, never leave the wrench in the chuck.
- Check travel and clearance between the tool post and chuck to prevent contact.
- Minimize all chemical exposures.
- Avoid skin and eye contact with all chemicals.
- Do not taste or intentionally sniff chemicals. Assume that all chemicals of unknown toxicity are highly toxic.
- Wash exposed areas of the skin prior to leaving the laboratory.
- Wash hands after using equipment and materials.
- Do not pour chemicals down drains.
- Do NOT utilize the sewer for chemical waste disposal.
- Never consume and/or store food or beverages or apply cosmetics in the lab specially in areas where hazardous chemicals are used or stored.
- No cell phone or ear phone usage in the active portion of the laboratories, or during experimental operations.
- Avoid distracting or startling persons working in the laboratory.
- Keep clear of any person operating tools and machinery (bumping an operator or get tangled in the lead could cause serious injury to you or the operator).
- Do not talk to anyone operating electrical equipment and machinery.
- No horseplay will be tolerated. Fooling around and practical jokes in the workshop will not be tolerated. These students will be told to leave.
- Lift, bend, and stretch with care to avoid injury. Musculoskeletal problems caused by poor technique when picking up boxes or stretching to reach objects is a common cause of workplace injury. If you're not sure how to best lift, bend or stretch at work, ask your supervisor or instructor.
- Student affected by drugs or alcohol are not permitted in the workshop. Not only can drugs and alcohol affect your motor skills, they can also impair your judgment and ability to communicate. Even prescription drugs can have a serious effect on your ability to handle machinery and tools safely.
- Students with any health problems that may affect workplace safety (e.g., medication, epileptic fits) must report these conditions to the workshop staff.
- Keep your working area neat and well organized; keep the floor clean of oil spills and metal chips.
- Clean off your machine when finished and return all tooling to the storage bins, trays, etc. The area must be swept clean before leaving your machine. Failure to do so will result in curtailment of privileges.
- Before leaving check that any tools you have been using have been put away in the appropriate spots, clean up your work area and notify the workshop staff.
- In the event of any problems arising while operating a piece of equipment, shut down the equipment and report the problem to the instructor.
- Report any personal injury to the instructor for treatment. Report any hazard you notice to the instructor. All accidents, cuts and abrasions must be reported before leaving the workshop. If an accident does happen, no matter how small, it must be reported to the workshop staff.
- Do not touch anyone who has been electrocuted.
- Do not cut corners or take unnecessary risks.
- Workplace safety rules are often developed in response to hazard and risk assessments. They are by nature designed to minimize the chances of injury while carrying out assigned tasks. All students should place emphasis on safety at all times. Anticipate the potential hazards and appropriate safety precautions before beginning any work.

## 8 – INDUSTRIAL TRAINING/ SUMMER PRACTICE

In the summer of the third year, students can opt to participate in industrial training. Students are able to gain engineering-work-related experience and to learn more about real-life business company operation from internships, which last from a minimum of 8 weeks (40 days) to more than eight weeks, depending on requirements of different employers. Students should obtain approval of the Summer Practice Committee before commencing training. Following this training, students will be required to write a formal report and present their work to the Summer Practice Committee. The aim of the training is to give students opportunity to observe real world engineering practices in a firm, and enhance the students' engineering knowledge acquired in class through field experience, develop the students' job related skills, appreciate interdisciplinary team work, and thus enable the students to explore their career interests.

Responsibility: When a student is sent to an external organisation, he/she will be fully liable to the organisation. His/her attitude must be according to the working scheme, rules and regulations of the organisation. For example, the student may only take leave upon approval from the organisation. To ensure effective supervision by the organisation, the student is not required to report to the supervisor/coordinator at the university, unless when necessary under certain circumstances from time to time for coordination purposes. Although the student will always be registered to the university during the training, the assessment done by the organisation on his/her at the end of the training will be taken as part of the evaluation of his/her overall performance and can result in his/her success and failure in undertaking the course.



\* Students can start the process if they are registered to MENG364 in the current semester. However, if they get F or W grade at the end of the semester they shall not do summer practice in the summer period.

If your MENG364 grade is already D- or above “YES”

If you did not registered MENG364 in the current semester and If your grade is already F or W  “NO”

• For Mechanical Engineering students there has to be at least one Mechanical Engineer employee, whereas for Mechatronics Engineering students there has to be at least one Mechanical or Electrical Engineer employee in the company

# If required use Form ST1, † No summer school and summer practice at the same time

The details are available on Summer Practice/ Industrial Training page <https://me.emu.edu.tr/en/industrial-training>

NOTE:

1. The students cannot do Summer Practice/ Industrial Training internship and take Summer Courses in the same semester.
2. After completing their Summer Practice/ Industrial Training internship, the students must register for MENG400/MECT400 Summer Practice/ Industrial Training course in the following semester. Otherwise, they will not be able to register it in a later semester. The registration for MENG400/MECT400 is not possible for another semester, it must be done immediately following the Summer training Semester. If the student fails to register in the following semester he/she must repeat the Summer Practice/ Industrial Training.



## 9 - CAPSTONE TEAM PROJECTS

---

Capstone Design Projects also known as "Senior design projects" are the centerpiece of the mechanical and mechatronics engineering curricula's professional component, allowing students to be involved in interesting, real-world activities. Each senior is required to complete this course. Capstone projects are each advised by a faculty member who supervises the capstone project teams.

The objective of the capstone design course is to provide students with a realistic independent design and development experience that allows them to integrate and apply the basic disciplinary material they have learned during their engineering program to solve practical design problems by synthesizing a new product, device or process within multiple realistic constraints. Projects are implemented conforming to relevant standards, ethical issues and environmental policies. Research topics, may be principally experimental, theoretical, applied or simulation, will be chosen in consultation with a project supervisor.

### **MENG410/MECT410 - Introduction to Capstone Design**

Capstone 1: During the first semester of the Capstone cycle (MENG410/MECT410) the student teams gain understanding of the project scope, formulate engineering specifications, develop conceptual solutions and designs, go through a concept analysis and selection process, carry out the necessary engineering analyses and arrive at a final proposed prototype design complete with engineering manufacturing drawings. This proposed prototype design is presented to a panel of expert professionals who provide assessment and critique, and the student team submits a final report at the close of the semester.

### **MENG411/MECT411 - Capstone Team Project**

Capstone 2: In the second semester of the cycle (MENG410/MECT410) the student teams proceed with physical realization and testing of their designs and at the end they deliver an engineered, tested and validated product, which they defend in front of the same panel of expert professionals. A final comprehensive report is then submitted by each team documenting their built and tested prototype along with the associated design, realization and testing processes. Failure to deliver a finished prototype adhering to specifications by the end of the cycle may result in failing the course. In order to avoid this, any non-compliance with specifications must be explained and viable solutions to address its root causes must be proposed.

In their journey through this two-course program and in addition to the conceptual and technical issues in design, the students have to deal with the challenges of teamwork, leadership, project and budget management, estimation, procurement, redesigns, as well as hands-on manufacturing and communications of all forms with their supervisor, technical support staff, and vendors. Capstone design projects allow the students to experience the rigor and structure of a full-cycle design, including: Problem definition, Benchmark studies, Concept generation, Concept evaluation, Concept selection and feasibility studies, Engineering design analyses, Prototype fabrication and testing.

Note: Please submit your reports to your respective Supervisors for approval one week before the final submission deadline. Please upload your report in MS Teams in your respective Project Group after approval of your respective Supervisors. Late submissions will be penalized with reduction in overall grades. Please upload your Project reports, Drawings, CAD Models, Presentation, Poster, Video, Animations etc in your respective MS Team.

The details are available on Capstone Design and Projects page <https://me.emu.edu.tr/en/capstone-design-projects>

## 10 - DEPARTMENTAL COMMITTEES

Departmental council establishes working committees and assigns faculty members to the committees. Each committee is responsible for one subject and carries out necessary work regarding the subject.

1- ABET COMMITTEE	
1	Assoc. Prof. Dr. Murat Özdenefe (Chair)
2	Assoc. Prof. Dr. Devrim Aydın
3	Prof. Dr. Qasim Zeeshan
	RA : Hussain Shawish
	RA : Zumurrud Mahmoud

2- ASSISTANTSHIP COMMITTEE	
1	Assoc. Prof. Dr. Devrim Aydın (Chair)
2	Assoc. Prof. Dr. Murat Özdenefe
3	Prof. Dr. Qasim Zeeshan
	RA : Erfan Malekian
	RA : Hussain Shawish

3- UNDERGRADUATE & DOUBLE MAJOR CURRICULUM COMMITTEE	
1	Assoc. Prof. Dr. Murat Özdenefe (Chair)
2	Prof. Dr. Hasan Hacısevki
3	Prof. Dr. Ugur Atikol
	RA : Yasser Hamed Elmoghazi

4- RECRUITMENT COMMITTEE	
1	Assoc. Prof. Dr. Murat Özdenefe (Chair)
2	Assoc. Prof. Devrim Aydın
3	Prof. Dr. Qasim Zeeshan
	RA : Hussain Shawish

5- GRADUATE COMMITTEE	
1	Prof. Dr. Ugur Atikol (Chair)
2	Prof. Dr. Qasim Zeeshan
3	Assoc. Prof. Dr. Babak Safaei
	RA : Garshasp Sakron

6- WORKSHOP AND LABORATORIES COMMITTEE*	
1	Prof. Dr. Hasan Hacısevki (Chair)
2	Assoc. Prof. Dr. Murat Özdenefe
3	Assoc. Prof. Dr. Devrim Aydın
	RA : Erfan Malekian
	RA : Hussain Shawish
	RA : Zumurrud Mahmoud
	RA : Ayşegül Gazioğlu
	RA : Yasser Hamed Elmoghazi
	RA : Emmanuel Chukwueloka Onyibo
	RA : Osinachi Mbah
	RA : Garshasp Sakron
	RA : Mahmoud Ahmed
	RA : Aslı Akyol Inada

7- PROMOTIONS COMMITTEE	
1	Prof. Dr. Uğur Atikol (Chair)
2	Prof. Dr. Hasan Hacısevki
3	Prof. Dr. Qasim Zeeshan
	RA : Ayşegül Gazioğlu
	RA : Osinachi Mbah

8- SUMMER PRACTICE COMMITTEE	
1	Assoc. Prof. Dr. Babak Safaei (Chair)
2	Prof. Dr. Hasan Hacısevki
	RA : Yasser Hamed Elmoghazi
	RA : Garshasp Sakron

9- TRANSFER STUDENTS COMMITTEE	
1	Assoc. Prof. Dr. Murat Özdenefe (Chair)
2	Prof. Dr. Uğur Atikol
3	Prof. Dr. Qasim Zeeshan
	RA : Osinachi Mbah

10- CAPSTONE PROJECTS COMMITTEE	
1	Assoc. Prof. Dr. Babak Safaei (Chair)
2	Prof. Dr. Qasim Zeeshan
	RA : Emmanuel Chukwueloka Onyibo

11- EXAM COORDINATOR	
1	Assoc. Prof. Dr. Devrim Aydın
	RA : Erfan Malekian
	RA : Aslı Akyol Inada

Each Assistant is responsible for the inventory, operations, safety, maintenance and cleaning of their respective course labs and equipment.

Laboratory/ Workshop/ Center	Responsible Team
Mechanical Workshop – ME008	RA : Zumurrud Mahmoud* RA : Erfan Malekian RA : Mahmoud Ahmed
Mechanics of Materials Laboratory – ME014	RA : Garshasp Sakron* RA : Zumurrud Mahmoud RA : Osinachi Mbah
Advanced Composite Laboratory – ME016	RA : Emmanuel Onyibo* RA : Yasser Hamed Elmoghazi RA : Amin Memarzadeh
Aerodynamics Laboratory – ME017	RA : Ayşegül Gazioğlu* RA : Erfan Malekian RA : Mahmoud Ahmed
Fluid Mechanics and Automotive Laboratory – ME020	RA : Ayşegül Gazioğlu* RA : Hussain Shawish RA : Aslı Akyol Inada
Manufacturing, Materials Science and Metrology Laboratory – ME024	RA : Zumurrud Mahmoud* RA : Yasser Hamed Elmoghazi RA : Amin Memarzadeh
Thermal Sciences Laboratory – ME025 Energy Research Center	RA : Erfan Malekian* RA : Hussain Shawish RA : Mahmoud Ahmed RA : Aslı Akyol Inada
Automation - I Laboratory – ME029	RA : Osinachi Mbah* RA : Ayşegül Gazioğlu
Automation - II Laboratory – ME028	RA : Osinachi Mbah* RA : Ayşegül Gazioğlu
Computing resources, Hardware and Software Used for Instruction	RA : Garshasp Sakron* RA : Hussain Shawish RA : Mahmoud Ahmed
Computer Laboratories within the department	RA : Hussain Shawish* RA : Garshasp Sakron RA : Mahmoud Ahmed
Department Library	RA : Mahmoud Ahmed* RA : Amin Memarzadeh

\* Team Leader